

# **J.E. ADAMS INDUSTRIES**

## **OWNERS MANUAL**

### **VACUUMS AIR/VACUUMS AIR/WATER/VACUUMS**

## ***TABLE OF CONTENTS***

|                 |                       |
|-----------------|-----------------------|
| <b>PAGE 1-3</b> | <b>SPECIFICATIONS</b> |
|-----------------|-----------------------|

|                 |                     |
|-----------------|---------------------|
| <b>PAGE 4-6</b> | <b>INSTALLATION</b> |
|-----------------|---------------------|

|                  |                      |
|------------------|----------------------|
| <b>PAGE 7-10</b> | <b>WIRE DIAGRAMS</b> |
|------------------|----------------------|

|                |                          |
|----------------|--------------------------|
| <b>PAGE 11</b> | <b>TIMER INFORMATION</b> |
|----------------|--------------------------|

|                   |                                    |
|-------------------|------------------------------------|
| <b>PAGE 12-16</b> | <b>DRAWINGS &amp; PART NUMBERS</b> |
|-------------------|------------------------------------|

|                |                        |
|----------------|------------------------|
| <b>PAGE 17</b> | <b>TROUBLESHOOTING</b> |
|----------------|------------------------|

|                |                    |
|----------------|--------------------|
| <b>PAGE 17</b> | <b>MAINTENANCE</b> |
|----------------|--------------------|

## **110V SPECIFICATIONS**

HEIGHT: 54-1/2"  
CANISTER DIAMETER: 19"  
DOME DIAMETER: 24"  
TOTAL DEPTH -  
REAR OF DOME TO  
FRONT OF LOCK BOX: 29"  
WEIGHT: 140 LB.

**VACUUM:**

110 VOLTS, (2 MOTOR VACS 20AMP SERVICE RECOMMENDED)  
(3 MOTOR VACS 30 AMP SERVICE RECOMMENDED)

188 CFM  
2 FILTER BAGS (8072)

**MOTORS:**

AMETEK UNIVERSAL TYPE, 50/60HZ  
2 STAGE PERIPHERAL BYPASS DISCHARGE  
UL RECOGNIZED CATEGORY  
PRGY2(E47185)  
CSA CERTIFIED, CLASS 1611 01(LR31393)

### ***SINGLE DOOR VACUUMS***

HEIGHT: 54-1/2"  
CANISTER DIAMETER: 19"  
DOME DIAMETER: 24"  
TOTAL DEPTH -  
REAR OF DOME TO  
FRONT OF LOCK BOX: 29"  
WEIGHT: 150 LB.

**VACUUM:**

110 VOLTS, (2 MOTOR VACS 20AMP SERVICE RECOMMENDED)  
(3 MOTOR VACS 30 AMP SERVICE RECOMMENDED)

188 CFM  
4 FILTER BAGS (8076)

**MOTORS:**

AMETEK UNIVERSAL TYPE, 50/60HZ  
2 STAGE PERIPHERAL BYPASS DISCHARGE  
UL RECOGNIZED CATEGORY  
PRGY2(E47185)  
CSA CERTIFIED, CLASS 1611 01(LR31393)

### ***2 DOOR VACUUMS***

HEIGHT: 54-1/2"  
CANISTER DIAMETER: 19"  
DOME DIAMETER: 24"  
TOTAL DEPTH -  
REAR OF DOME TO  
FRONT OF LOCK BOX: 26"  
WEIGHT: 140 LB.

**VACUUM:**

110 VOLTS, (2 MOTOR VACS 20AMP SERVICE RECOMMENDED)  
(3 MOTOR VACS 30 AMP SERVICE RECOMMENDED)

188 CFM  
2 FILTER BAGS (8072)

**MOTORS:**

AMETEK UNIVERSAL TYPE, 50/60HZ  
2 STAGE PERIPHERAL BYPASS DISCHARGE  
UL RECOGNIZED CATEGORY  
PRGY2(E47185)  
CSA CERTIFIED, CLASS 1611 01(LR31393)

### ***COMMERCIAL SINGLE DOOR VACUUMS***

HEIGHT: 54-1/2"  
CANISTER DIAMETER: 19"  
DOME DIAMETER: 24"  
TOTAL DEPTH -  
REAR OF DOME TO  
FRONT OF LOCK BOX: 29"  
WEIGHT: 140 LB.

**VACUUM:**

110 VOLTS, (2 MOTOR VACS 20AMP SERVICE RECOMMENDED)  
(3 MOTOR VACS 30 AMP SERVICE RECOMMENDED)

188 CFM  
4 FILTER BAGS (8076)

**MOTORS:**

AMETEK UNIVERSAL TYPE, 50/60HZ  
2 STAGE PERIPHERAL BYPASS DISCHARGE  
UL RECOGNIZED CATEGORY  
PRGY2(E47185)  
CSA CERTIFIED, CLASS 1611 01(LR31393)

### ***COMMERCIAL 2 DOOR VACUUMS***

HEIGHT: 61"  
CANISTER DIMS: 15.98" x 26.28"  
DOME DIMS: 19.9" x 30"  
TOTAL DEPTH -  
REAR OF DOME TO  
FRONT OF LOCK BOX: 35"  
WEIGHT: 223 LB.

**VACUUM:**

110 VOLTS, (2 MOTOR VACS 20 AMP SERVICE RECOMMENDED)  
(3 MOTOR VACS 30 AMP SERVICE RECOMMENDED)

188 CFM  
2 OR 3 FILTER BAGS (8072)

**MOTORS:**

AMETEK UNIVERSAL TYPE, 50/60HZ  
2 STAGE PERIPHERAL BYPASS DISCHARGE  
UL RECOGNIZED CATEGORY  
PRGY2(E47185)  
CSA CERTIFIED, CLASS 1611 01(LR31393)

### ***OVAL VACUUMS***

HEIGHT: 59"  
CANISTER DIMS: 15.60" x 26.12"  
DOME DIMS: 19.9" x 30"  
TOTAL DEPTH -  
FACE TO FACE: 37"  
WEIGHT: 215 LB.

**VACUUM:**

110 VOLTS, (2 SEPARATE 20 AMPS SERVICE RECOMMENDED)

188 CFM  
4 FILTER BAGS (8076)

**MOTORS:**

AMETEK UNIVERSAL TYPE, 50/60HZ  
2 STAGE PERIPHERAL BYPASS DISCHARGE  
UL RECOGNIZED CATEGORY  
PRGY2(E47185)  
CSA CERTIFIED, CLASS 1611 01(LR31393)

### ***DUAL VACUUMS***

HEIGHT: 54-1/2"  
CANISTER DIMS: 19"  
DOME DIMS: 19.9" x 30"  
TOTAL DEPTH -  
REAR OF DOME TO  
FRONT OF LOCK BOX: 29"  
WEIGHT: 206 LB.

**VACUUM:**

110 VOLTS, (2 SEPARATE 20 AMPS SERVICE RECOMMENDED)

188 CFM  
2 FILTER BAGS (8072)

**MOTORS:**

AMETEK UNIVERSAL TYPE, 50/60HZ  
2 STAGE PERIPHERAL BYPASS DISCHARGE  
UL RECOGNIZED CATEGORY  
PRGY2(E47185)  
CSA CERTIFIED, CLASS 1611 01(LR31393)

**AIR COMPRESSOR:**

110V / 60HZ / 10.6 AMPS

¾ HP / ONE CYLINDER / ONE STAGE OIL-LESS

SCFM @ PSI

3.78 @ 0  
3.43 @ 20  
3.04 @ 40  
2.14 @ 90  
1.99 @ 100

### ***SINGLE DOOR AIR / VACUUMS WITH THOMAS***

HEIGHT: 54-1/2"  
CANISTER DIMS: 19"  
DOME DIMS: 19.9" x 30"  
TOTAL DEPTH -  
REAR OF DOME TO  
FRONT OF LOCK BOX: 29"  
WEIGHT: 206 LB.

**VACUUM:**

110 VOLTS, (2 SEPARATE 20 AMPS SERVICE RECOMMENDED)

188 CFM  
2 FILTER BAGS (8072)

**MOTORS:**

AMETEK UNIVERSAL TYPE, 50/60HZ  
2 STAGE PERIPHERAL BYPASS DISCHARGE  
UL RECOGNIZED CATEGORY  
PRGY2(E47185)  
CSA CERTIFIED, CLASS 1611 01(LR31393)

**AIR COMPRESSOR:**

110V / 60HZ / 14 AMPS

1.5 HP / ONE CYLINDER / ONE STAGE OIL-LESS

SCFM @ PSI

6 @ 0  
5 @ 20  
4.1 @ 40  
3.1 @ 90  
2.9 @ 100  
2.1 @ 125 (MAX PSI)

### ***SINGLE DOOR AIR / VACUUMS WITH DEVILBISS***

HEIGHT: 54-1/2"  
CANISTER DIMS: 19"  
DOME DIMS: 19.9" x 30"  
TOTAL DEPTH -  
REAR OF DOME TO  
FRONT OF LOCK BOX: 29"  
WEIGHT: 206 LB.

**2 DOOR AIR /  
VACUUMS  
WITH THOMAS**

VACUUM:  
110 VOLTS, (2 SEPARATE 20 AMPS SERVICE RECOMMENDED)  
188 CFM  
4 FILTER BAGS (8076)  
MOTORS:  
AMETEK UNIVERSAL TYPE, 50/60HZ  
2 STAGE PERIPHERAL BYPASS DISCHARGE  
UL RECOGNIZED CATEGORY  
PRGY2(E47185)  
CSA CERTIFIED, CLASS 1611 01(LR31393)  
AIR COMPRESSOR:  
110V / 60HZ / 10.6 AMPS  
¾ HP / ONE CYLINDER / ONE STAGE OIL-LESS  
SCFM @ PSI  
3.78 @ 0  
3.43 @ 20  
3.04 @ 40  
2.14 @ 90  
1.99 @ 100

HEIGHT: 54-1/2"  
CANISTER DIMS: 19"  
DOME DIMS: 19.9" x 30"  
TOTAL DEPTH -  
REAR OF DOME TO  
FRONT OF LOCK BOX: 29"  
WEIGHT: 206 LB.

**2 DOOR AIR /  
VACUUMS  
WITH DEVILBISS**

VACUUM:  
110 VOLTS, (2 SEPARATE 20 AMPS SERVICE RECOMMENDED)  
188 CFM  
4 FILTER BAGS (8076)  
MOTORS:  
AMETEK UNIVERSAL TYPE, 50/60HZ  
2 STAGE PERIPHERAL BYPASS DISCHARGE  
UL RECOGNIZED CATEGORY  
PRGY2(E47185)  
CSA CERTIFIED, CLASS 1611 01(LR31393)  
AIR COMPRESSOR:  
110V / 60HZ / 14 AMPS  
1.5 HP / ONE CYLINDER / ONE STAGE OIL-LESS  
SCFM @ PSI  
6 @ 0  
5 @ 20  
4.1 @ 40  
3.1 @ 90  
2.9 @ 100  
2.1 @ 125 (MAX PSI)

HEIGHT: 54-1/2"  
CANISTER DIMS: 19"  
DOME DIMS: 19.9" x 30"  
TOTAL DEPTH -  
REAR OF DOME TO  
FRONT OF LOCK BOX: 29"  
WEIGHT: 206 LB.

**1 DOOR AIR /  
WATER / VACUUMS  
WITH THOMAS**

VACUUM:  
110 VOLTS, (2 SEPARATE 20 AMPS SERVICE RECOMMENDED)  
188 CFM  
4 FILTER BAGS (8076)  
MOTORS:  
AMETEK UNIVERSAL TYPE, 50/60HZ  
2 STAGE PERIPHERAL BYPASS DISCHARGE  
UL RECOGNIZED CATEGORY  
PRGY2(E47185)  
CSA CERTIFIED, CLASS 1611 01(LR31393)  
AIR COMPRESSOR:  
110V / 60HZ / 10.6 AMPS  
¾ HP / ONE CYLINDER / ONE STAGE OIL-LESS  
SCFM @ PSI  
3.78 @ 0  
3.43 @ 20  
3.04 @ 40  
2.14 @ 90  
1.99 @ 100

HEIGHT: 54-1/2"  
CANISTER DIMS: 19"  
DOME DIMS: 19.9" x 30"  
TOTAL DEPTH -  
REAR OF DOME TO  
FRONT OF LOCK BOX: 29"  
WEIGHT: 206 LB.

**1 DOOR AIR /  
WATER / VACUUMS  
WITH DEVILBISS**

VACUUM:  
110 VOLTS, (2 SEPARATE 20 AMPS SERVICE RECOMMENDED)  
188 CFM  
4 FILTER BAGS (8076)  
MOTORS:  
AMETEK UNIVERSAL TYPE, 50/60HZ  
2 STAGE PERIPHERAL BYPASS DISCHARGE  
UL RECOGNIZED CATEGORY  
PRGY2(E47185)  
CSA CERTIFIED, CLASS 1611 01(LR31393)  
AIR COMPRESSOR:  
110V / 60HZ / 14 AMPS  
1.5 HP / ONE CYLINDER / ONE STAGE OIL-LESS  
SCFM @ PSI  
6 @ 0  
5 @ 20  
4.1 @ 40  
3.1 @ 90  
2.9 @ 100  
2.1 @ 125 (MAX PSI)

## **220V SPECIFICATIONS**

HEIGHT: 54-1/2"  
CANISTER DIAMETER: 19"  
DOME DIAMETER: 24"  
TOTAL DEPTH -  
REAR OF DOME TO  
FRONT OF LOCK BOX: 29"  
WEIGHT: 140 LB.

**SINGLE DOOR  
VACUUMS**

VACUUM:  
220V / 60HZ, (2 MOTOR VACS 10 AMP SERVICE RECOMMENDED)  
(3 MOTOR VACS 15 AMP SERVICE RECOMMENDED)  
188 CFM  
2 FILTER BAGS (8072)  
MOTORS:  
AMETEK UNIVERSAL TYPE, 50/60HZ  
2 STAGE PERIPHERAL BYPASS DISCHARGE  
UL RECOGNIZED CATEGORY  
PRGY2(E47185)  
CSA CERTIFIED, CLASS 1611 01(LR31393)

HEIGHT: 54-1/2"  
CANISTER DIAMETER: 19"  
DOME DIAMETER: 24"  
TOTAL DEPTH -  
REAR OF DOME TO  
FRONT OF LOCK BOX: 29"  
WEIGHT: 150 LB.

**2 DOOR  
VACUUMS**

VACUUM:  
220V / 60HZ, (2 MOTOR VACS 10 AMP SERVICE RECOMMENDED)  
(3 MOTOR VACS 15 AMP SERVICE RECOMMENDED)  
188 CFM  
4 FILTER BAGS (8076)  
MOTORS:  
AMETEK UNIVERSAL TYPE, 50/60HZ  
2 STAGE PERIPHERAL BYPASS DISCHARGE  
UL RECOGNIZED CATEGORY  
PRGY2(E47185)  
CSA CERTIFIED, CLASS 1611 01(LR31393)

HEIGHT: 54-1/2"  
CANISTER DIAMETER: 19"  
DOME DIAMETER: 24"  
TOTAL DEPTH -  
REAR OF DOME TO  
FRONT OF LOCK BOX: 26"  
WEIGHT: 140 LB.

**COMMERCIAL  
SINGLE DOOR  
VACUUMS**

VACUUM:  
220V / 60HZ, (2 MOTOR VACS 10 AMP SERVICE RECOMMENDED)  
(3 MOTOR VACS 15 AMP SERVICE RECOMMENDED)  
188 CFM  
2 FILTER BAGS (8072)  
MOTORS:  
AMETEK UNIVERSAL TYPE, 50/60HZ  
2 STAGE PERIPHERAL BYPASS DISCHARGE  
UL RECOGNIZED CATEGORY  
PRGY2(E47185)  
CSA CERTIFIED, CLASS 1611 01(LR31393)

HEIGHT: 54-1/2"  
CANISTER DIAMETER: 19"  
DOME DIAMETER: 24"  
TOTAL DEPTH -  
REAR OF DOME TO  
FRONT OF LOCK BOX: 29"  
WEIGHT: 140 LB.

**COMMERCIAL  
2 DOOR  
VACUUMS**

VACUUM:  
220V / 60HZ, (2 MOTOR VACS 10 AMP SERVICE RECOMMENDED)  
(3 MOTOR VACS 15 AMP SERVICE RECOMMENDED)  
188 CFM  
4 FILTER BAGS (8076)  
MOTORS:  
AMETEK UNIVERSAL TYPE, 50/60HZ  
2 STAGE PERIPHERAL BYPASS DISCHARGE  
UL RECOGNIZED CATEGORY  
PRGY2(E47185)  
CSA CERTIFIED, CLASS 1611 01(LR31393)

HEIGHT: 61"  
CANISTER DIMS: 15.98" x 26.28"  
DOME DIMS: 19.9" x 30"  
TOTAL DEPTH -  
REAR OF DOME TO  
FRONT OF LOCK BOX: 35"  
WEIGHT: 223 LB.

**OVAL  
VACUUMS**

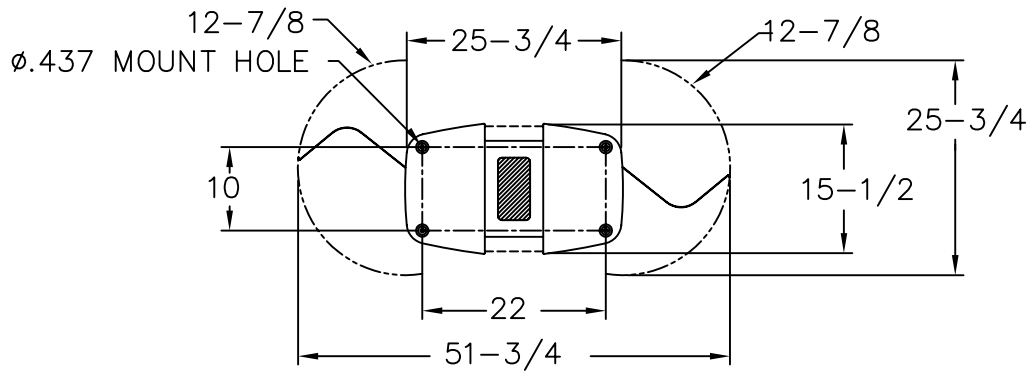
VACUUM:  
220V / 60HZ, (2 MOTOR VACS 10 AMP SERVICE RECOMMENDED)  
(3 MOTOR VACS 15 AMP SERVICE RECOMMENDED)  
188 CFM  
2 OR 3 FILTER BAGS (8072)  
MOTORS:  
AMETEK UNIVERSAL TYPE, 50/60HZ  
2 STAGE PERIPHERAL BYPASS DISCHARGE  
UL RECOGNIZED CATEGORY  
PRGY2(E47185)  
CSA CERTIFIED, CLASS 1611 01(LR31393)

HEIGHT: 59"  
CANISTER DIMS: 15.60" x 26.12"  
DOME DIMS: 19.9" x 30"  
TOTAL DEPTH -  
FACE TO FACE: 37"  
WEIGHT: 215 LB.

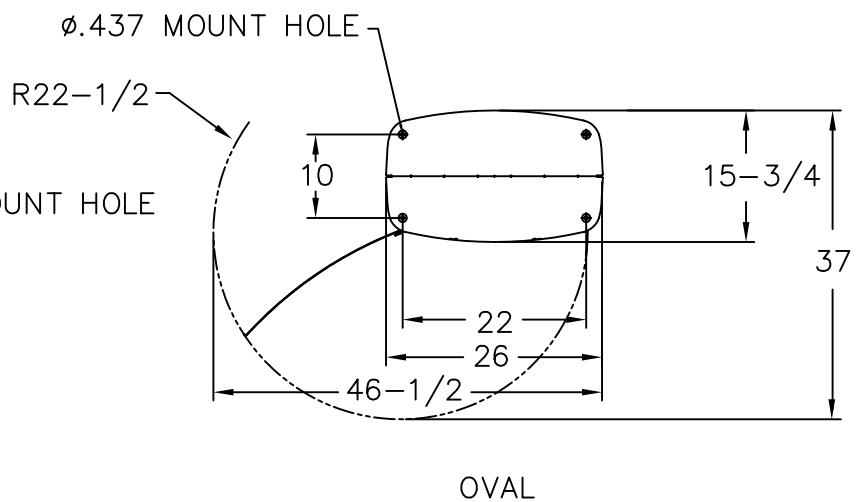
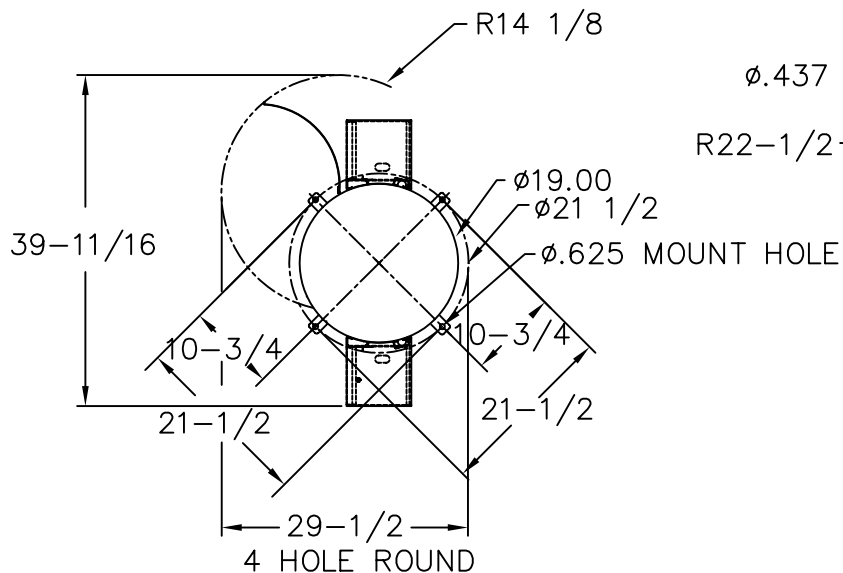
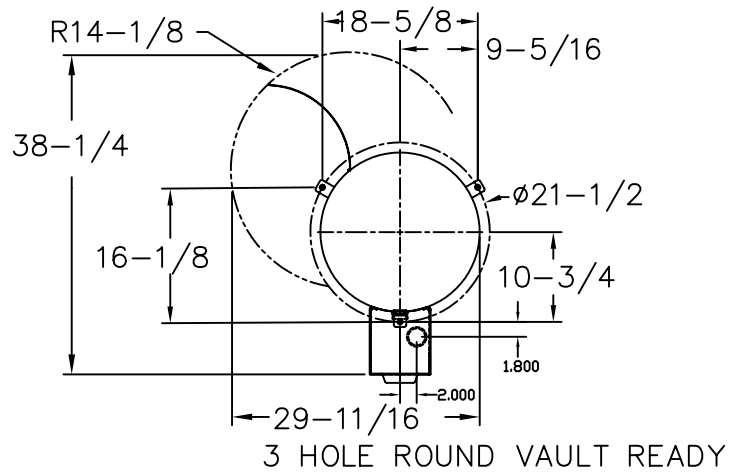
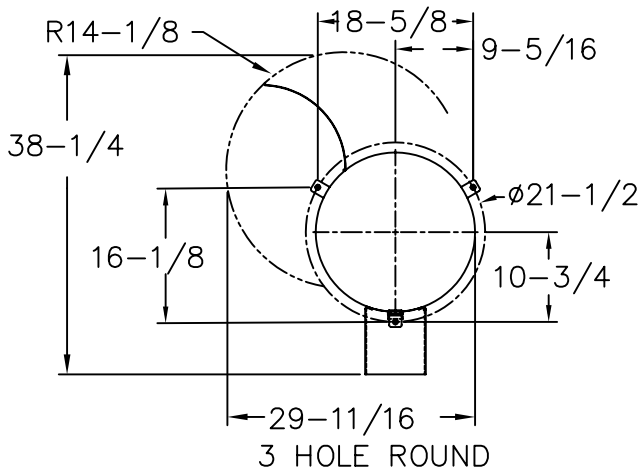
**DUAL  
VACUUMS**

VACUUM:  
220V / 60HZ, (2 SEPARATE 10 AMPS SERVICE RECOMMENDED)  
188 CFM  
4 FILTER BAGS (8076)  
MOTORS:  
AMETEK UNIVERSAL TYPE, 50/60HZ  
2 STAGE PERIPHERAL BYPASS DISCHARGE  
UL RECOGNIZED CATEGORY  
PRGY2(E47185)  
CSA CERTIFIED, CLASS 1611 01(LR31393)

# J.E. ADAMS VAC INSTALLATION 1 OF 3



DUAL

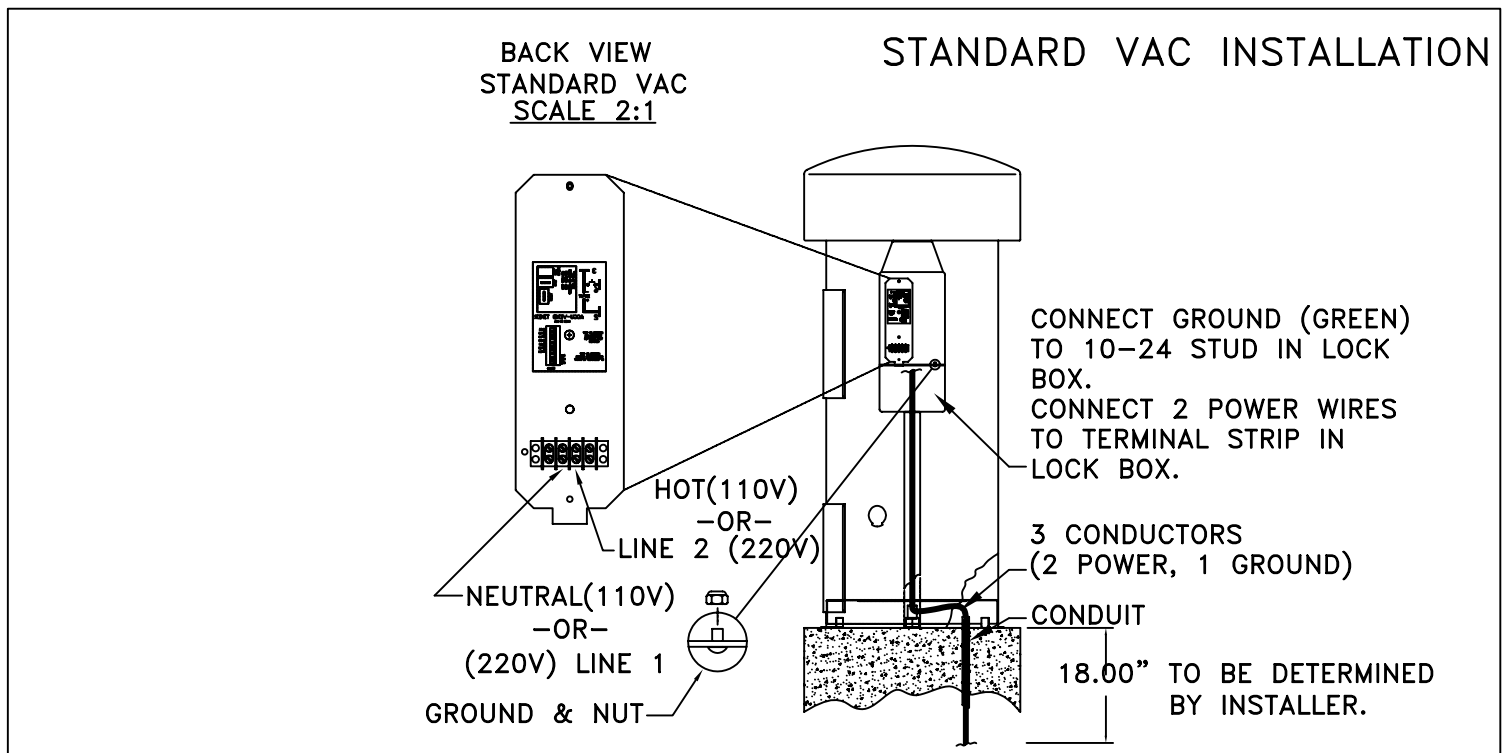
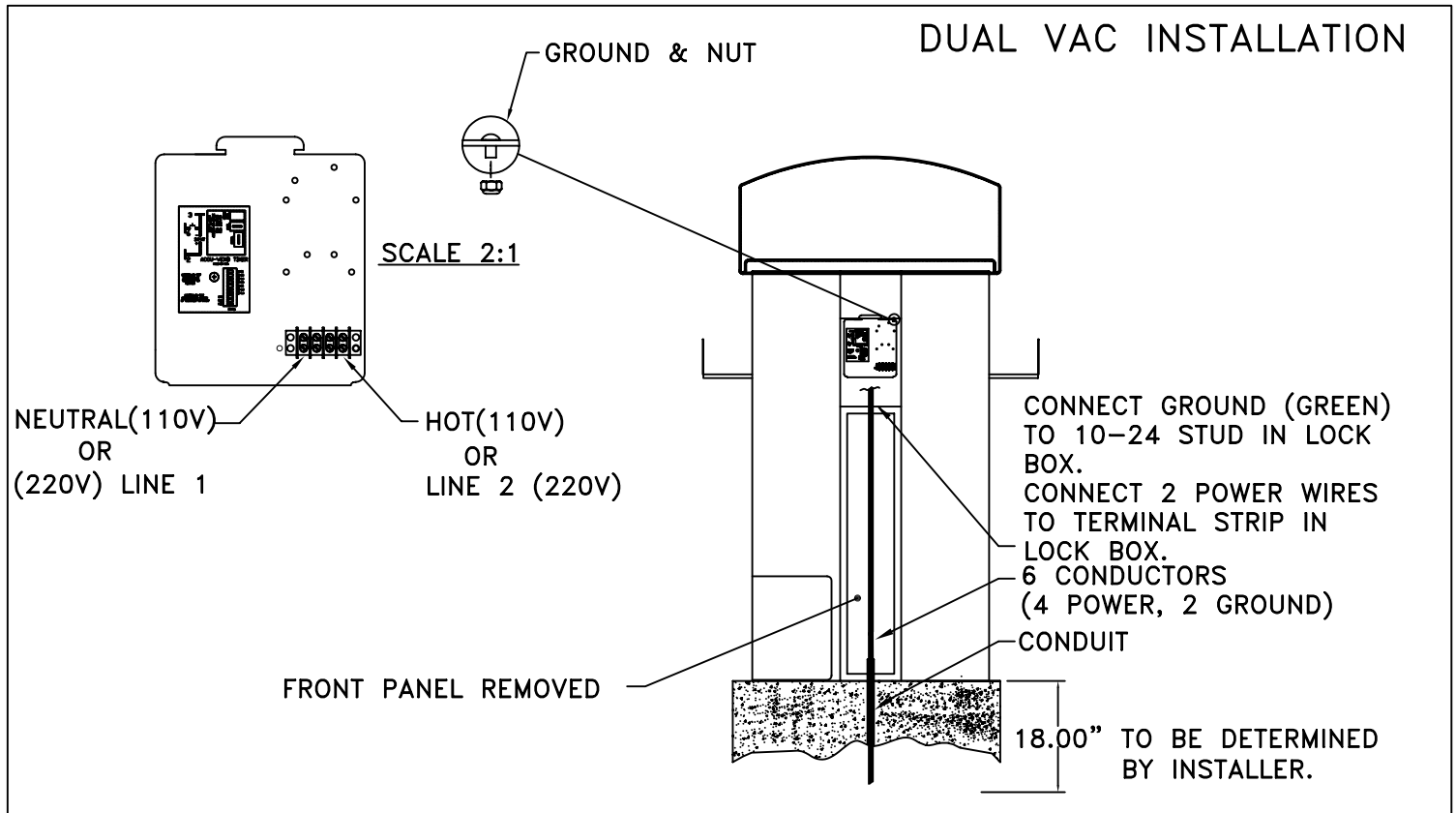


## NOTE:

- 1) ALL DIMENSIONS ARE IN INCHES.
- 2) STUD SIZE 3/8-16UNC x 1"
- 3) 4" MIN CONCRETE AROUND STUD.
- 4) MIN. 18" RECOMMENDED PAD HEIGHT FOR BUMPER CLEARANCE.
- 5) FOR GASOLINE DESPENSING LOCATIONS:
  - A) A MINIMUM OF 18" HIGH PAD ABOVE THE DRIVEWAY AND A MINIMUM. 20 FOOT HORIZONTAL DISTANCE FROM EXTERIOR ENCLOSURE OF ANY GASOLINE DISPENSING PUMP.

# J.E. ADAMS VAC INSTALLATION 2 OF 3

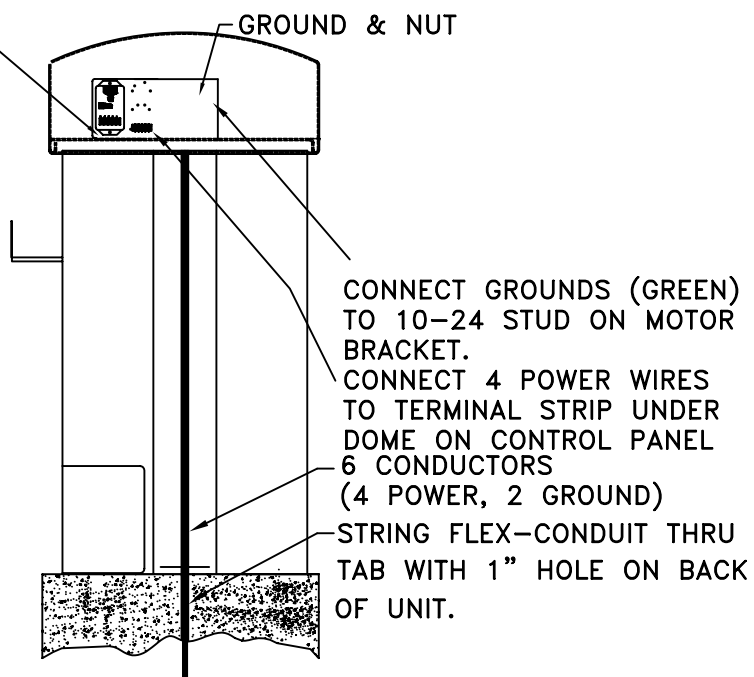
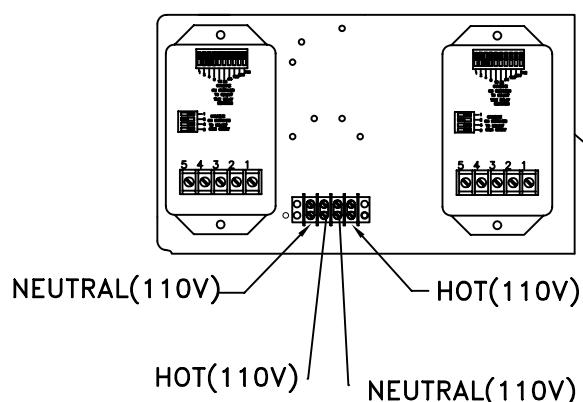
- 1) WE RECOMMEND THAT THE UNIT BE INSTALLED BY A CERTIFIED ELECTRICIAN. THIS WILL INSURE THAT ALL NATIONAL AND LOCAL ELECTRICAL CODES HAVE BEEN ADHERED TO AND CORRECT GAGE OF WIRE HAS BEEN USED BASED ON THE SPECIFIED REQUIREMENTS.
- 2) AFTER ELECTRICAL SERVICE HAS BEEN SUPPLIED CHECK TIMER FOR DESIRED SETTINGS.
- 3) ONCE TIMER HAS BEEN SET UNIT IS NOW READY TO BE POWERED UP AND READY FOR USE.



## J.E. ADAMS VAC INSTALLATION 3 OF 3

- 1) WE RECOMMEND THAT THE UNIT BE INSTALLED BY A CERTIFIED ELECTRICIAN. THIS WILL INSURE THAT ALL NATIONAL AND LOCAL ELECTRICAL CODES HAVE BEEN ADHERED TO AND CORRECT GAGE OF WIRE HAS BEEN USED BASED ON THE SPECIFIED REQUIREMENTS.
- 2) AFTER ELECTRICAL SERVICE HAS BEEN SUPPLIED CHECK TIMER FOR DESIRED SETTINGS.
- 3) ONCE TIMER HAS BEEN SET UNIT IS NOW READY TO BE POWERED UP AND READY FOR USE.

### AIR/VAC AND AIR /WATER/ VAC INSTALLATION



**IMPORTANT NOTE:**  
**AIR/VAC UNIT IS TO BE**  
**HOOKEK UP USING (2)**  
**SEPERATE INCOMING**  
**SERVICES. 20 AMP SERVICE**  
**FOR THE AIR AND 20 AMP**  
**SERVICE FOR THE VAC.**  
**IF THE UNIT IS NOT HOOKEK UP**  
**IN THIS MANNER IT MAY RESULT**  
**IN UNIT FAILING. PROBLEMS THAT**  
**CAN OCCUR MAY INCLUDE COMPRESSOR**  
**FAILURE, TIMER MALFUNCTIONS OR UNIT**  
**RUNNING INCONSISTENTLY.**

PART NO.

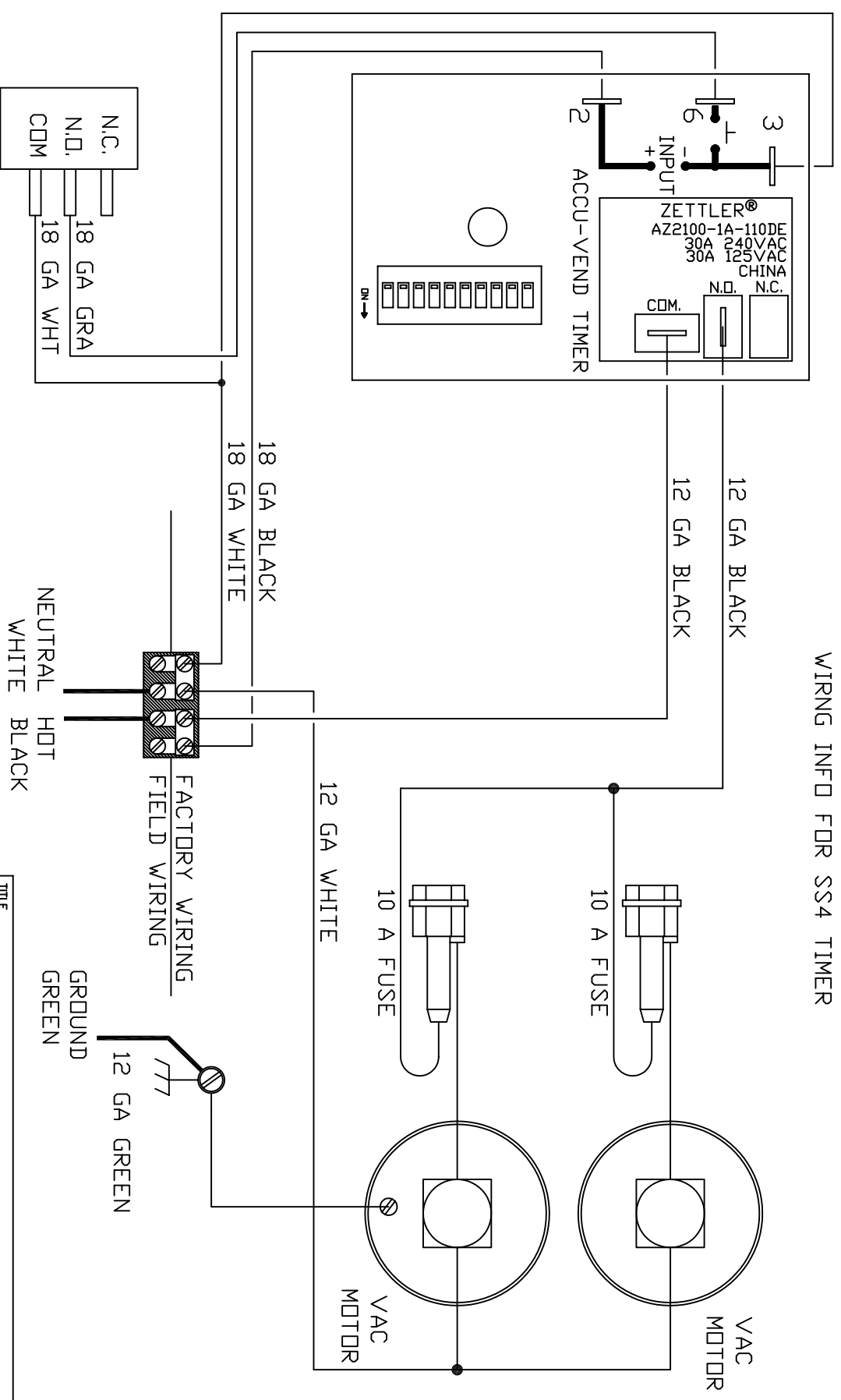
S9200-C

THIS DOCUMENT SHALL NOT BE REPRODUCED NOR SHALL THE INFORMATION THEREIN BE USED BY OR DISCLOSED TO OTHERS EXCEPT AS AUTHORIZED BY J.E. ADAMS INDUSTRIES

BILL OF MATERIAL

| ITEM NO. | PART NO. | DESCRIPTION | QTY. |
|----------|----------|-------------|------|
|----------|----------|-------------|------|

WIRING INFO FOR SS4 TIMER

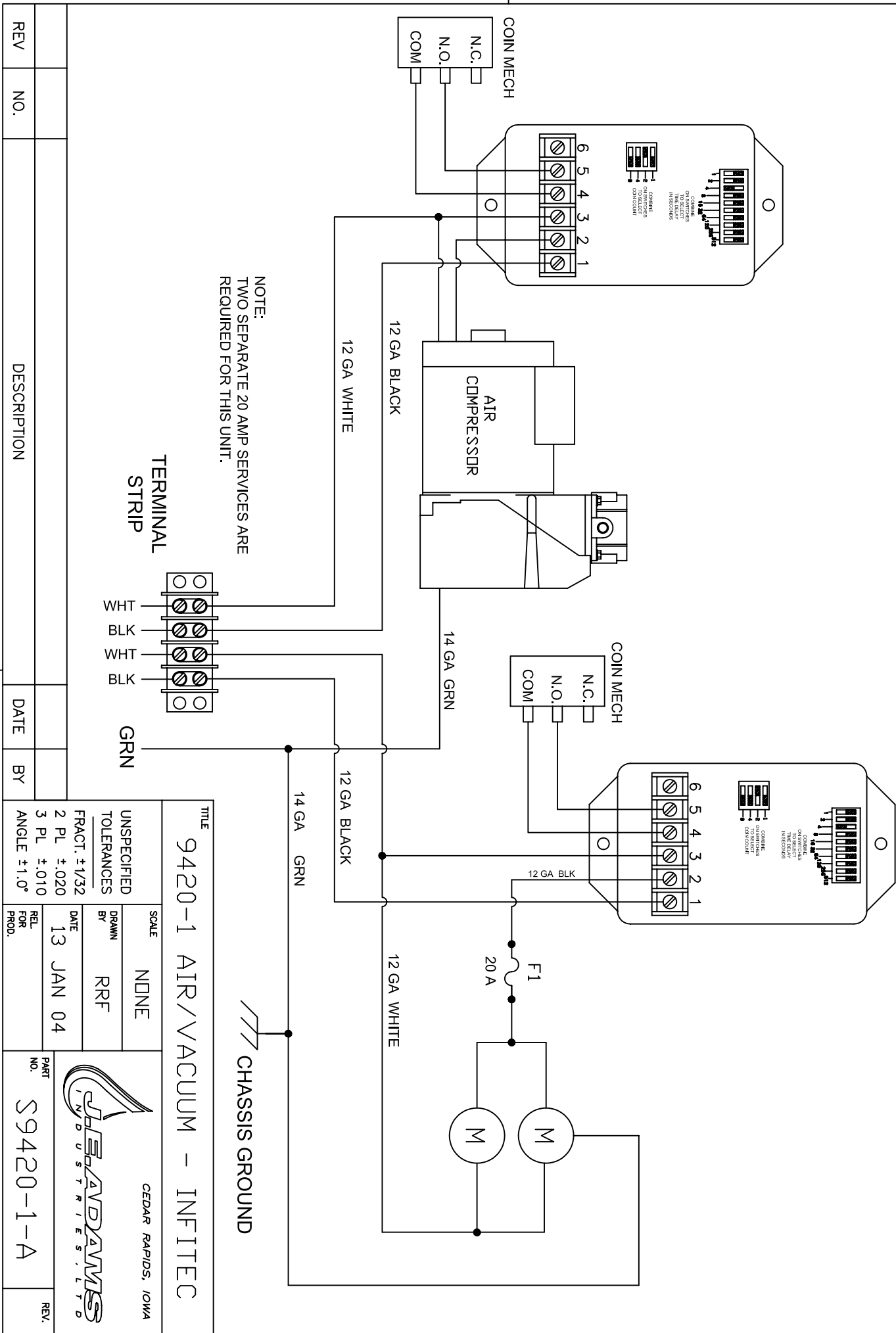


TERMINAL STRIP ON BACK SIDE OF  
TIMER PLATE IN LOCK BDX  
FIELD WIRING MUST COMPLY WITH  
WITH LOCAL AND NATIONAL ELECTRICAL CODES

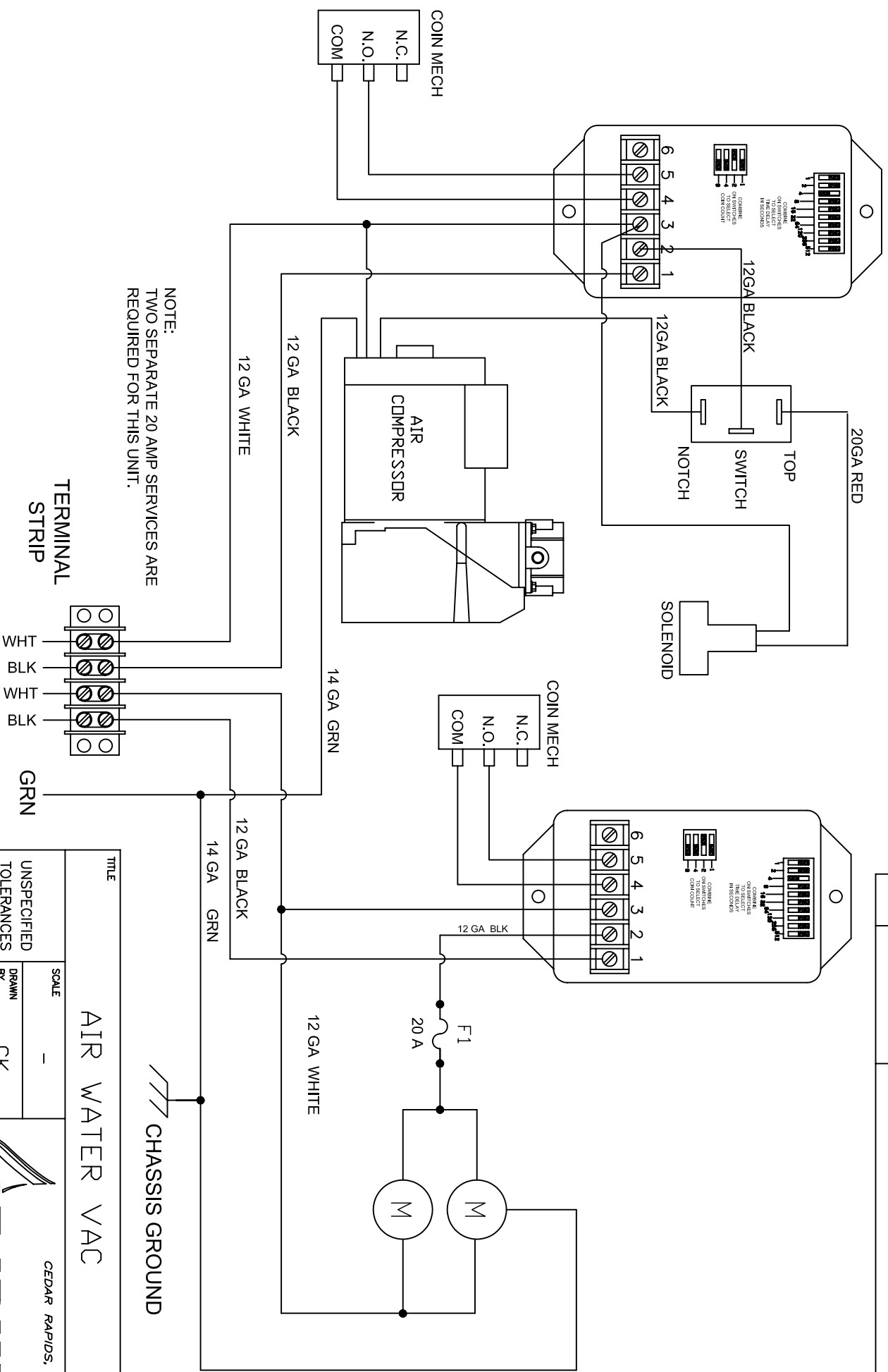
| REV | NO. | DESCRIPTION | DATE | BY | TITLE       | SCALE | UNSPECIFIED TOLERANCES | FRAC. ±1/32 | 2 PL ±.020 | 3 PL ±.010 | ANGLE ±1.0° | REL. FOR PROD. | PART NO. | REV. |
|-----|-----|-------------|------|----|-------------|-------|------------------------|-------------|------------|------------|-------------|----------------|----------|------|
|     |     |             |      |    | SSAC, TIMER | -     | CK                     | 4-04        |            |            |             |                | S9200-C  |      |



| BILL OF MATERIAL |          |             |
|------------------|----------|-------------|
| ITEM NO.         | PART NO. | DESCRIPTION |
|                  |          | 1           |

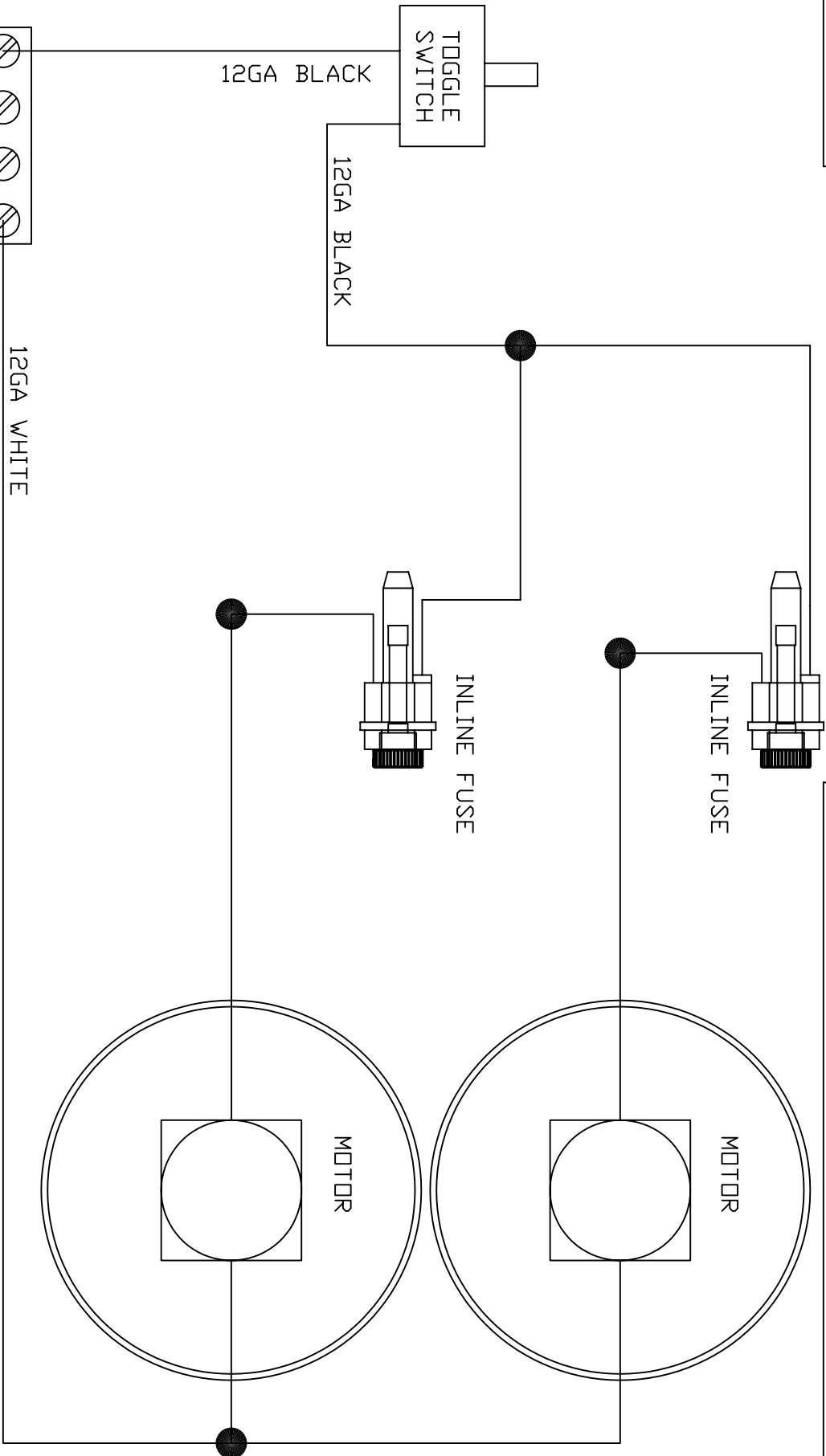


| ITEM NO. | PART NO. | DESCRIPTION | QTY. |
|----------|----------|-------------|------|
|          |          |             | 1    |



**NOTE:  
TWO SEPARATE 20 AMP SERVICES ARE  
REQUIRED FOR THIS UNIT.**

|     |     |             |      |    |                       |                |          |      |
|-----|-----|-------------|------|----|-----------------------|----------------|----------|------|
|     |     |             |      |    | 2 PL $\pm .020$       | 7-04           | PART NO. | REV. |
|     |     |             |      |    | 3 PL $\pm .010$       |                |          |      |
| REV | NO. | DESCRIPTION | DATE | BY | ANGLE $\pm 1.0^\circ$ | REL. FOR PROD. | \$8648-A |      |



| REV |  |  | NO. |  | DESCRIPTION |  | DATE | BY | PART NO. |  | REV. |
|-----|--|--|-----|--|-------------|--|------|----|----------|--|------|
|     |  |  |     |  |             |  |      |    | S8505-A  |  | -    |

TITLE

2 M- COMMERCIAL ON-OFF TOGGLE

MATERIAL

UNSPECIFIED TOLERANCES

SCALE

DATE

REL. FOR PROD.

DRAWN BY

CK

5-04

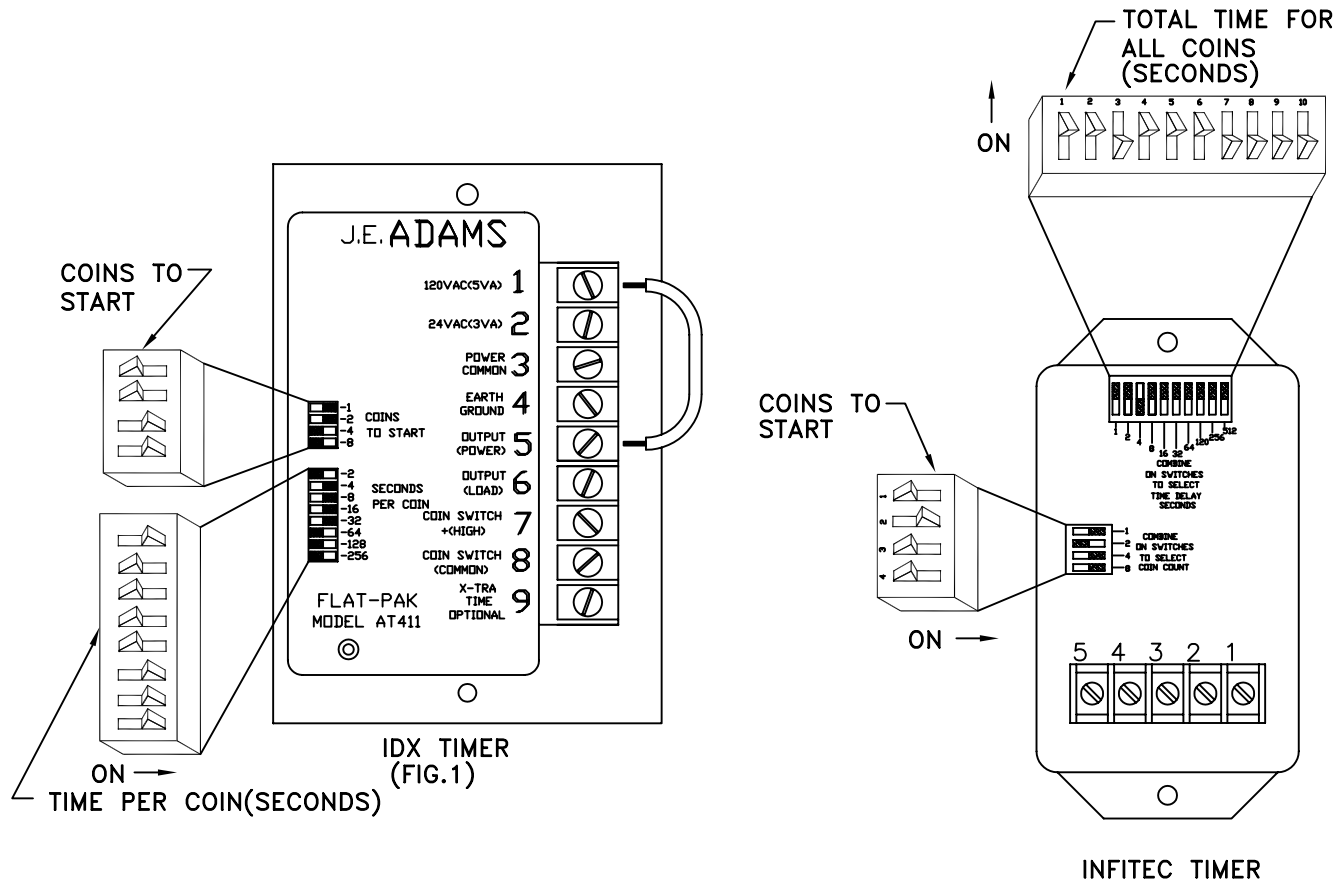
-

J.E. ADAMS

INDUSTRIES, LTD.

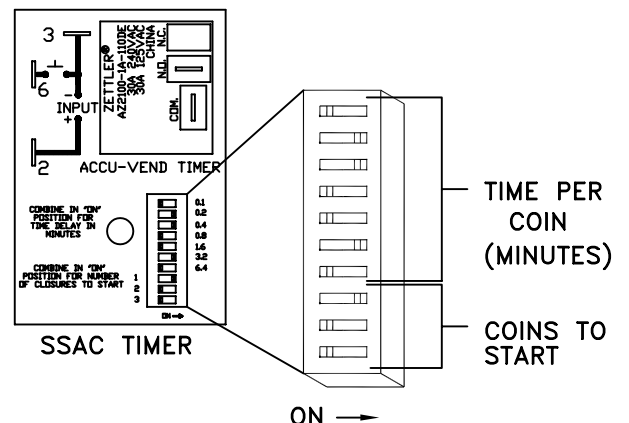
CEDAR RAPIDS, IOWA

# TIMER SETUP

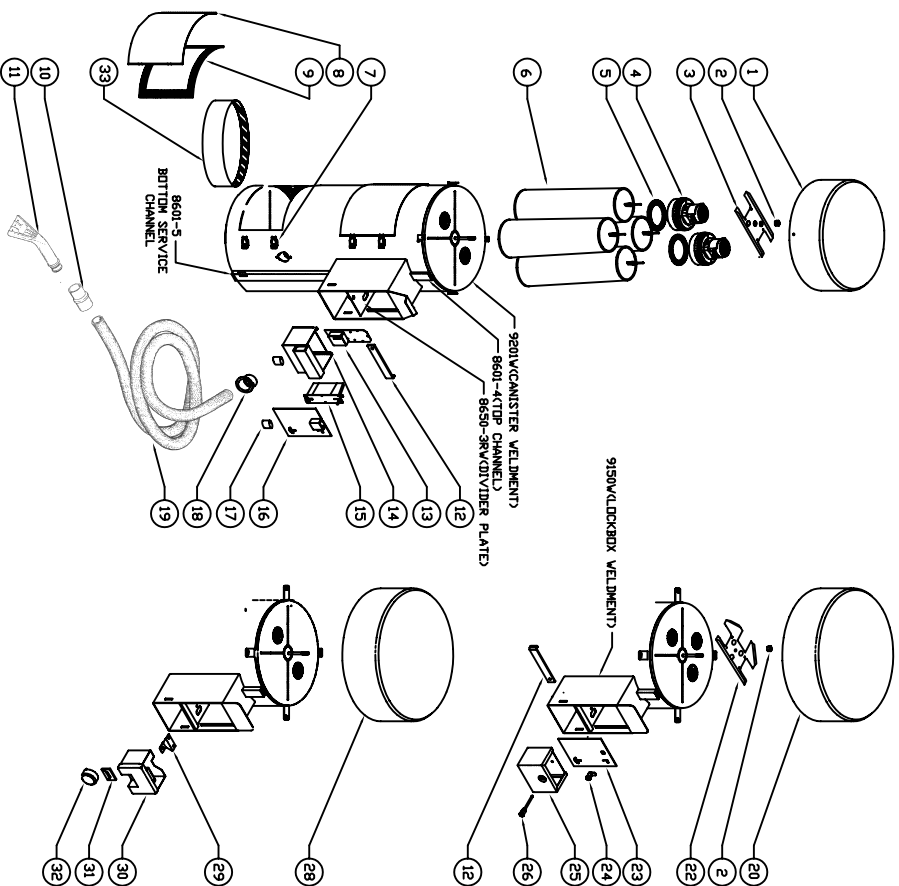


## NOTE:

- 1) SSAC TIMERS "AE" AND "AN" SERIES AND IDX TIMERS ARE BOTH ACCUMULATING TIMERS, MEANING THAT DURING TIMING PERIOD TIME CAN BE EXTENDED PROPORTIONALLY BY ADDING MORE COINS. SSAC TIMERS "SE" AND "SN" SERIES ARE NON-ACCUMULATING.
- 2) IF APPLICABLE: "OPEN" MEANS "OFF" FOR COIN COUNT AND TIME SETTING (INFITEC TIMERS).
- 3) COIN COUNT AND TIME SETTINGS ARE DETERMINED BY ADDING THE VALUES OF ALL SWITCHES SET TO "ON". FOR EXAMPLE FIG. 1 IS SET FOR 3 COINS TO START AND TIME IS SET FOR 60 SECONDS PER COIN FOR A TOTAL OF 180 SECONDS.

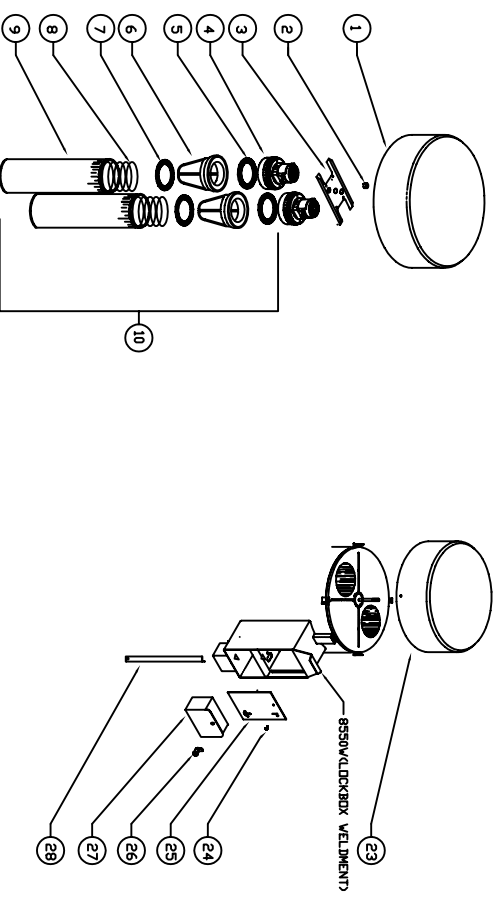


J.E. ADAMS 2 DOOR VAC'S



|     |            |                          |     |         |                                    |
|-----|------------|--------------------------|-----|---------|------------------------------------|
| 1)  | 8101       | STAINLESS DOME, ECONDVAC | 17) | 8638    | PIN LOCK                           |
| 2)  | 56603011   | NUT, MOTOR MOUNT         | 18) | 8615-7  | INLET TUBE                         |
| 3)  | 8053G      | 2 MOTOR BRACKET          | 19) | 2036    | 2" x 15' BLACK VAC HOSE            |
| 4)  | 8055       | VAC MOTOR, AMTEK         | 20) | 8306    | PLASTIC DOME 24"                   |
| 5)  | 8057       | MOTOR GASKET             | 22) | 8051-3M | 3 MOTOR BRACKET                    |
| 6)  | 8076       | FILTER BAG ASSY          | 23) | 8952W   | FACEPLATE, CAM LOCK                |
| 7)  | 8153-1     | LATCH, CLEANOUT DOOR     | 24) | 8953    | CAM LOCK, AND KEY, MEDCO           |
| 8)  | 8159       | DOOR GASKET              |     | 6124    | CAM LOCK AND KEY, FIRST(ECONO)     |
| 9)  | 8615-SV    | CLEANOUT DOOR            | 25) | 8954W   | CORN BOX, SCREW LOCK               |
| 10) | 2091       | CLUF                     | 26) | 8955    | SCREW LOCK AND KEY, MEDCO          |
| 11) | 2056-BLACK | CLAW CLAMP NOZZLE        |     | 6128    | SCREW LOCK AND KEY, FOR(ECONO)     |
| 12) | 8206       | LOCK BAR (OPTIONAL)      | 28) | 8305    | STAINLESS DOME                     |
| 13) | 8718SS34   | SSAC TIMER               | 29) | 9114    | LOCK HASP, BOLT-DN                 |
| 14) | 8204RV     | COIN BOX, PIN LOCK       | 30) | 9113W   | COIN BOX, AMERICAN 2000 LOCK       |
| 15) | 8149       | INDEX COIN ACCEPTOR      | 31) | 8928    | PLASTIC SPACER, AMERICAN 2000 LOCK |
| 16) | 8219V      | FACEPLATE, RIGHT, LOCK   | 32) | 8920-1  | AMERICAN 2000 LOCK                 |

J.E. ADAMS SINGLE DOOR VAC'S



|     |             |                         |
|-----|-------------|-------------------------|
| 1)  | 8305        | STAINLESS DOME, LARGE   |
| 2)  | 5603011     | NUT, MOTOR MOUNT        |
| 3)  | 80516       | 2 MOTOR BRACKET         |
| 4)  | 8055        | VAC MOTOR, AMETEK       |
| 5)  | 8057        | MOTOR GASKET            |
| 6)  | 8060        | MOTOR BUSHING           |
| 7)  | 8063        | BUSHING GASKET          |
| 8)  | 8075        | SPRING                  |
| 9)  | 8072        | FILTER BAG              |
| 10) | 8079        | FILTER BAG ASSY         |
| 11) | 8153-1      | LATCH, CLEANOUT DDDR    |
| 12) | 8159        | DDDR GASKET             |
| 13) | 8615-5W     | CLEANOUT DDDR           |
| 14) | 2091        | CUFF                    |
| 15) | 2056- BLACK | CLAW NOZZLE, BLACK      |
| 16) | 8712SS4     | SSAC TIMER              |
| 17) | 8204RW      | COIN BOX, PINLOCK       |
| 18) | 8149        | INDEX COIN ACCEPTOR     |
| 19) | 8211W       | FACEPLATE, RIGHT PIN    |
| 20) | 8638        | PIN LOCK                |
| 21) | 8615-7      | INLET TUBE              |
| 22) | 2036        | 2" X 15" BLACK VAC HOSE |
| 23) | 8101        | STAINLESS DOME, ECODND  |
| 24) | 8132        | FACEPLATE FASTENER      |
| 25) | 8511R       | FACEPLATE               |
| 26) | 8138        | CAM LOCK                |
| 27) | 8520V       | CIN BOX                 |
| 28) | 8525        | LOCK BAR                |
| 29) | 8559        | CLEANOUT BAG (OPTIONAL) |
| 30) | 8206        | LOCK BAR (OPTIONAL)     |

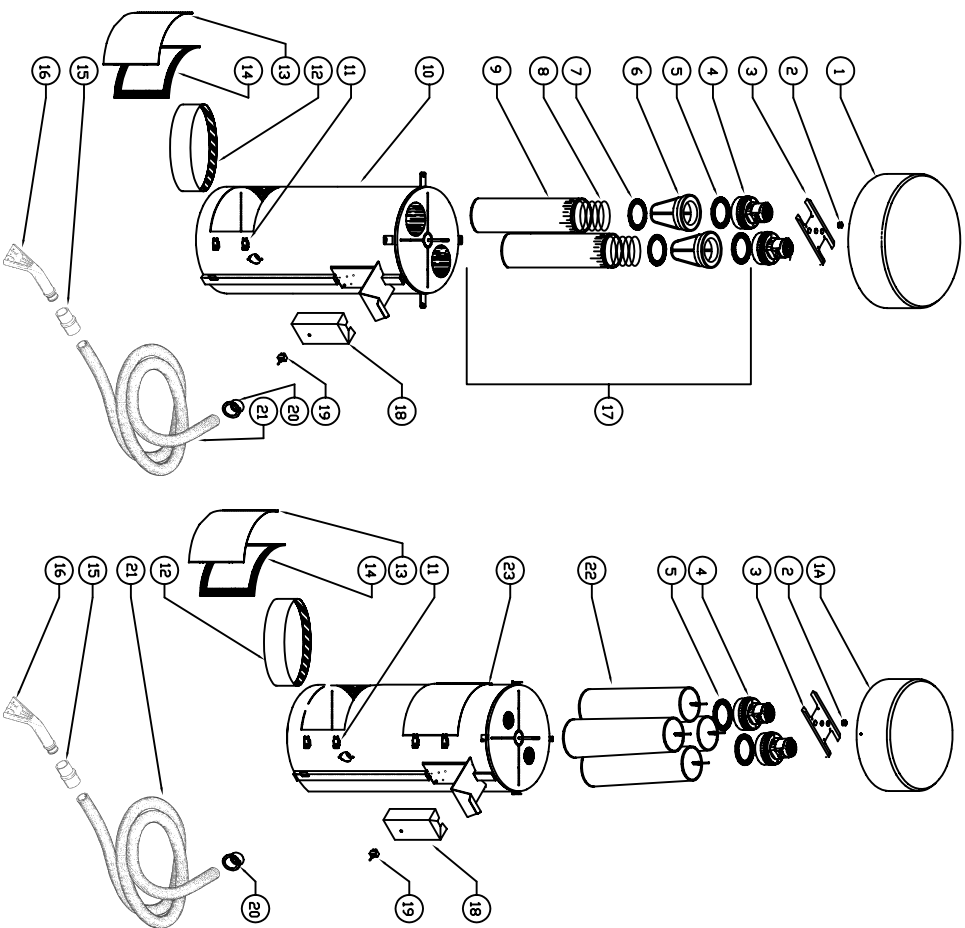
PARTS NOT SHOWN ON DRAWING

|        |               |
|--------|---------------|
| 8429-4 | DECAL, \$1.75 |
| 8429-5 | DECAL, \$1.00 |

|           |                            |
|-----------|----------------------------|
| 8173      | DECAL, DEPOSIT QUARTERS SL |
| 8423-2    | DECAL, VACUUM DOME         |
| 8424-1    | DECAL, SUPER VAC CANISTER  |
| B5996-010 | 10 AMP FUSE                |
| B5997-001 | FUSE HOLDER                |

PAGE 12

# J.E. ADAMS COMMERCIAL VAC'S



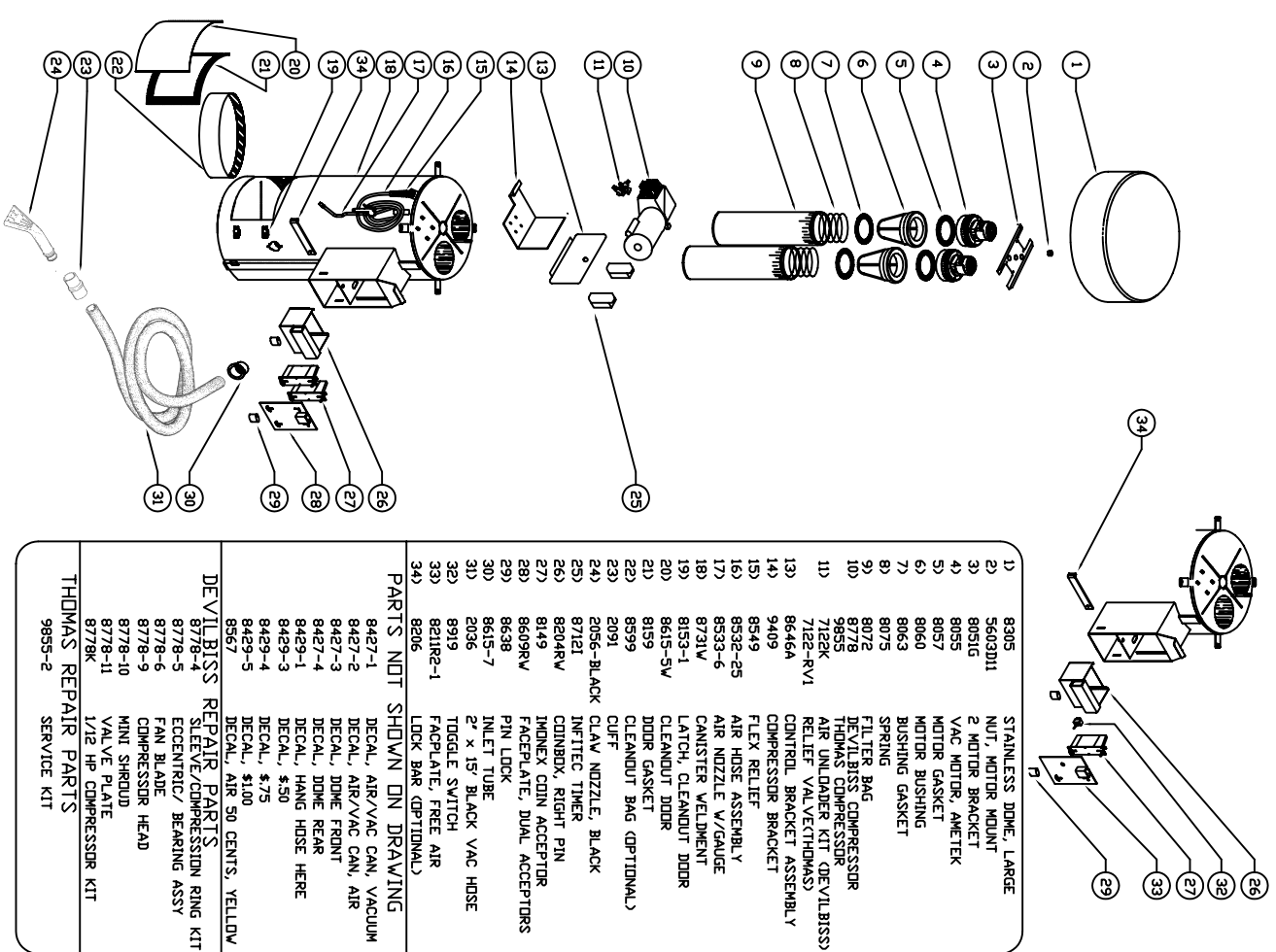
|     |         |                         |     |            |                           |
|-----|---------|-------------------------|-----|------------|---------------------------|
| 1)  | 8305    | STAINLESS DOME, LARGE   | 12) | 8599       | CLEANOUT BAG (OPTIONAL)   |
| 1A) | 8101    | STAINLESS DOME, ECNDMD  | 13) | 8615-SV    | CLEANOUT DOOR             |
| 2)  | 5603D11 | NUT, MOTOR MOUNT        | 14) | 8159       | DOOR GASKET               |
| 3)  | 8051G   | 2 MOTOR BRACKET         | 15) | 2091       | CUFF                      |
| 4)  | 8055    | VAC MOTOR, AMETEK       | 16) | 2056-BLACK | CLAW NOZZLE, BLACK        |
| 5)  | 8057    | MOTOR GASKET            | 17) | 8079       | FILTER BAG ASSEMBLY       |
| 6)  | 8060    | MOTOR BUSHING           | 18) | 8505-1     | COVER, CONTROL PLATE      |
| 7)  | 8063    | BUSHING GASKET          | 19) | 8918       | WATERPROOF SWITCH, ON-OFF |
| 8)  | 8075    | FILTER SPRING           | 20) | 8615-7     | INLET TUBE                |
| 9)  | 8072    | FILTER BAG (2 BAG VACS) | 21) | 2036       | 2" x 15' BLACK VAC HOSE   |
| 10) | 8519W   | CANISTER WELDMENT       | 22) | 8076       | FILTER BAG (4 BAG VACS)   |
| 11) | 8153-1  | LATCH, CLEANOUT DOOR    | 23) | 9226W      | CANISTER WELDMENT         |

**PARTS NOT SHOWN ON DRAWING**

8423-1 DECAL, SILVER TOUCH CANISTER  
8423-2 DECAL, VACUUM DOME

8429-1 DECAL, HANG HOSE HERE

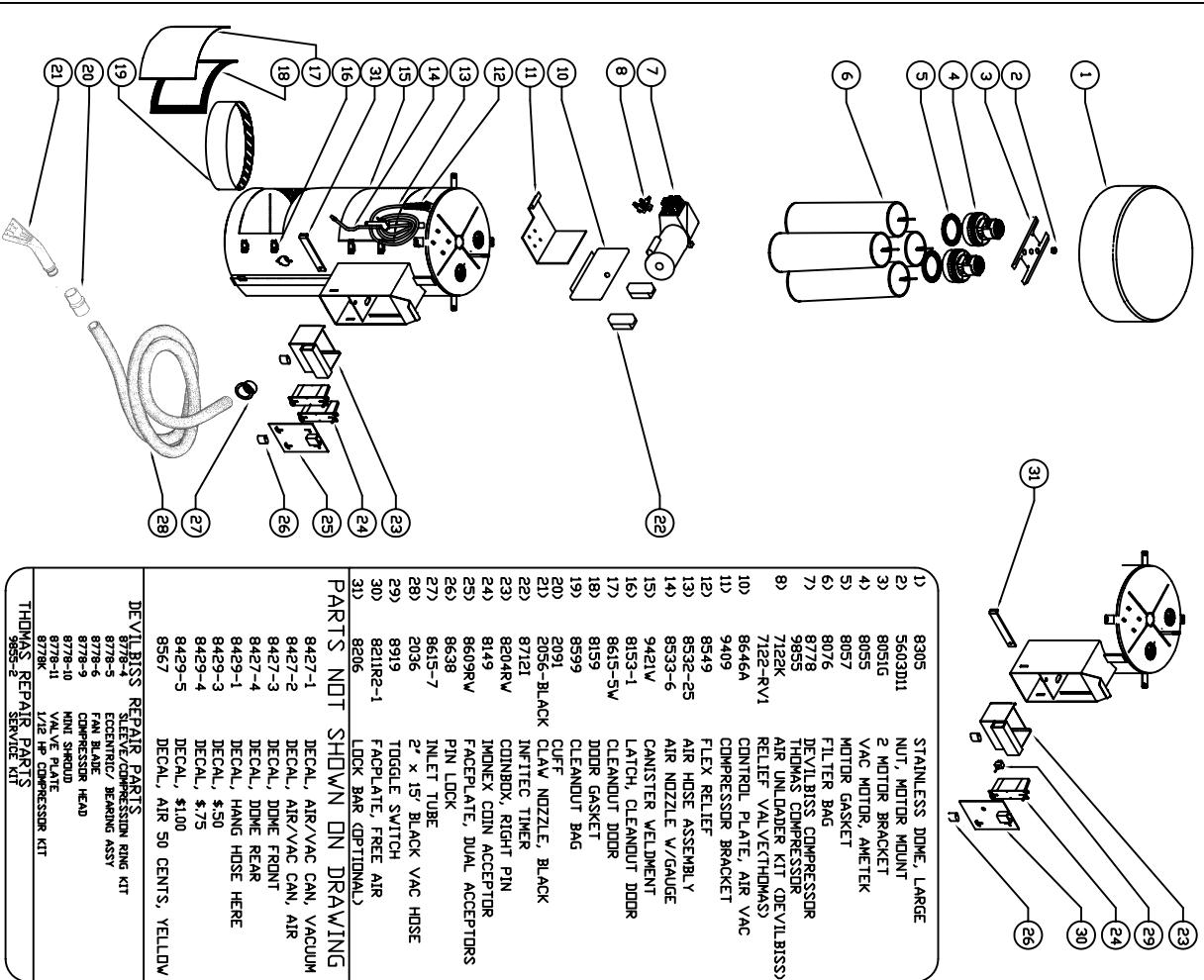
# J.E. ADAMS AIR-VAC SINGLE DOOR



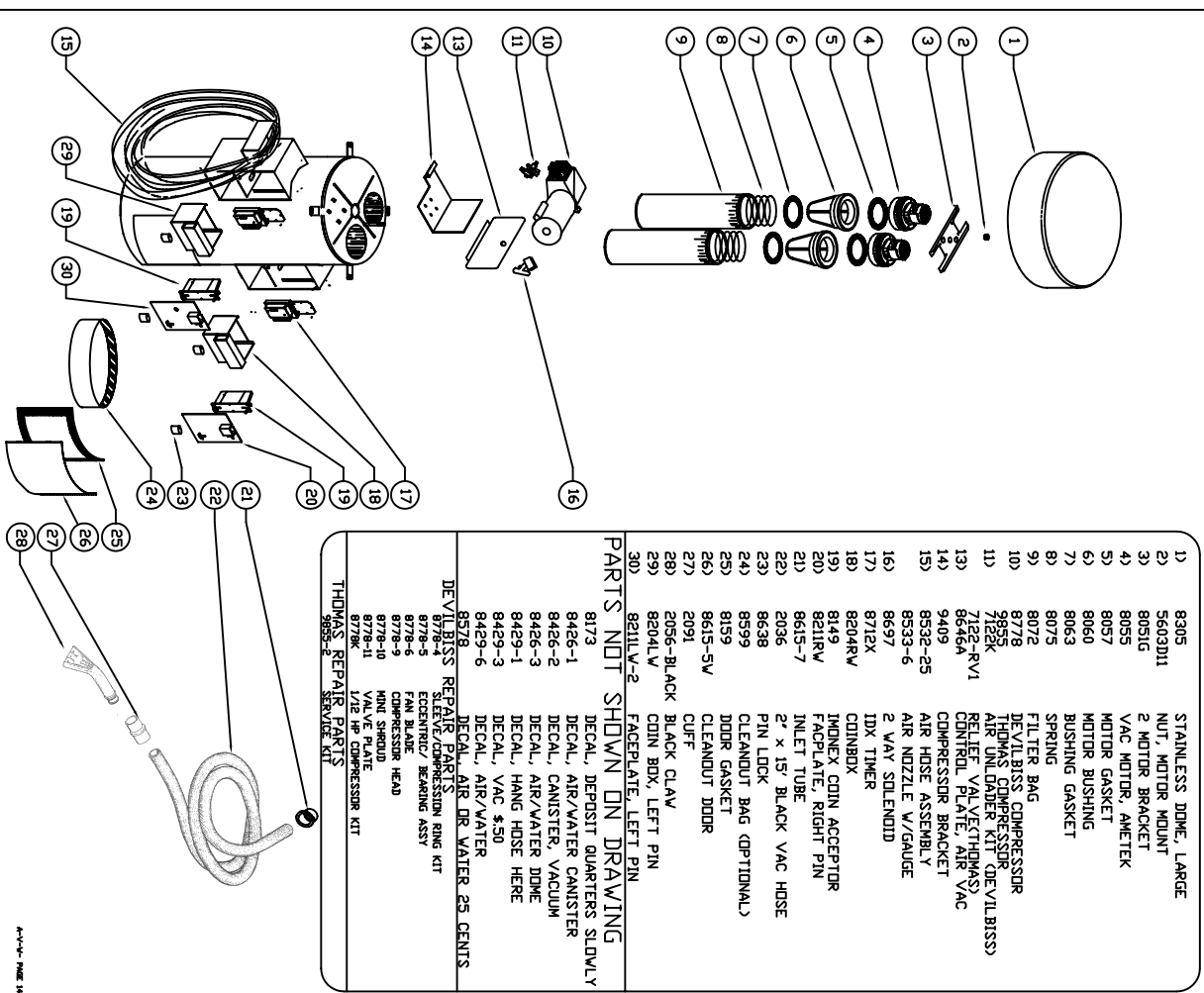
|     |            |                           |     |            |                           |
|-----|------------|---------------------------|-----|------------|---------------------------|
| 1)  | 8305       | STAINLESS DOME, LARGE     | 12) | 8599       | CLEANOUT BAG (OPTIONAL)   |
| 2)  | 5603D11    | NUT, MOTOR MOUNT          | 13) | 8615-SV    | CLEANOUT DOOR             |
| 3)  | 8051G      | 2 MOTOR BRACKET           | 14) | 8159       | DOOR GASKET               |
| 4)  | 8055       | VAC MOTOR, AMETEK         | 15) | 2091       | CUFF                      |
| 5)  | 8057       | MOTOR GASKET              | 16) | 2056-BLACK | CLAW NOZZLE, BLACK        |
| 6)  | 8060       | MOTOR BUSHING             | 17) | 8079       | FILTER BAG ASSEMBLY       |
| 7)  | 8063       | BUSHING GASKET            | 18) | 8505-1     | COVER, CONTROL PLATE      |
| 8)  | 8075       | FILTER SPRING             | 19) | 8918       | WATERPROOF SWITCH, ON-OFF |
| 9)  | 8072       | FILTER BAG (2 BAG VACS)   | 20) | 8615-7     | INLET TUBE                |
| 10) | 8519W      | CANISTER WELDMENT         | 21) | 2036       | 2" x 15' BLACK VAC HOSE   |
| 11) | 8153-1     | LATCH, CLEANOUT DOOR      | 22) | 8076       | FILTER BAG (4 BAG VACS)   |
| 12) | 9226W      | CANISTER WELDMENT         | 23) | 9226W      | CANISTER WELDMENT         |
| 13) | 8646A      | CONTROL BRACKET ASSEMBLY  | 24) | 87121      | INTEC TIMER               |
| 14) | 9409       | COMPRESSOR BRACKET        | 25) | 8204RW     | CONDOX, RIGHT PIN         |
| 15) | 8549       | FLEX RELIEF               | 26) | 8149       | INDEX CON ACCEPTOR        |
| 16) | 8532-25    | AIR HOSE ASSEMBLY         | 27) | 8609RW     | FACEPLATE, DUAL ACCEPTORS |
| 17) | 8533-6     | AIR NOZZLE W/GAUGE        | 28) | 8638       | PIN LOCK                  |
| 18) | 8731W      | CANISTER WELDMENT         | 29) | 8615-7     | INLET TUBE                |
| 19) | 8153-1     | LATCH, CLEANOUT DOOR      | 30) | 2036       | 2" x 15' BLACK VAC HOSE   |
| 20) | 8615-SV    | CLEANOUT DOOR             | 31) | 8919       | TOGGLE SWITCH             |
| 21) | 8159       | DOOR GASKET               | 32) | 82182-1    | FACEPLATE, FREE AIR       |
| 22) | 8599       | CLEANOUT BAG (OPTIONAL)   | 33) | 8206       | LOCK BAR (OPTIONAL)       |
| 23) | 2091       | CUFF                      | 34) |            |                           |
| 24) | 2056-BLACK | CLAW NOZZLE, BLACK        |     |            |                           |
| 25) | 87121      | INTEC TIMER               |     |            |                           |
| 26) | 8204RW     | CONDOX, RIGHT PIN         |     |            |                           |
| 27) | 8149       | INDEX CON ACCEPTOR        |     |            |                           |
| 28) | 8609RW     | FACEPLATE, DUAL ACCEPTORS |     |            |                           |
| 29) | 8638       | PIN LOCK                  |     |            |                           |
| 30) | 8615-7     | INLET TUBE                |     |            |                           |
| 31) | 2036       | 2" x 15' BLACK VAC HOSE   |     |            |                           |
| 32) | 8919       | TOGGLE SWITCH             |     |            |                           |
| 33) | 82182-1    | FACEPLATE, FREE AIR       |     |            |                           |
| 34) | 8206       | LOCK BAR (OPTIONAL)       |     |            |                           |

|                                   |                             |
|-----------------------------------|-----------------------------|
| <b>PARTS NOT SHOWN ON DRAWING</b> |                             |
| 8427-1                            | DECAL, AIR/VAC CAN, VACUUM  |
| 8427-2                            | DECAL, AIR/VAC CAN, AIR     |
| 8427-3                            | DECAL, DOME FRONT           |
| 8427-4                            | DECAL, DOME REAR            |
| 8429-1                            | DECAL, HANG HOSE HERE       |
| 8429-3                            | DECAL, \$50                 |
| 8429-4                            | DECAL, \$75                 |
| 8429-5                            | DECAL, \$100                |
| 8567                              | DECAL, AIR 50 CENTS, YELLOW |
| <b>DEVILBISS REPAIR PARTS</b>     |                             |
| 8778-4                            | SLEEVE/COMPRESSION RING KIT |
| 8778-5                            | ECCENTRIC BEARING ASSY      |
| 8778-6                            | FAN BLADE                   |
| 8778-9                            | COMPRESSOR HEAD             |
| 8778-10                           | MINI SHROUD                 |
| 8778-11                           | VALVE PLATE                 |
| 8778K                             | 1/2 HP COMPRESSOR KIT       |
| <b>THOMAS REPAIR PARTS</b>        |                             |
| 9855-2                            | SERVICE KIT                 |

# J.E. ADAMS AIR-VAC 2 DOOR

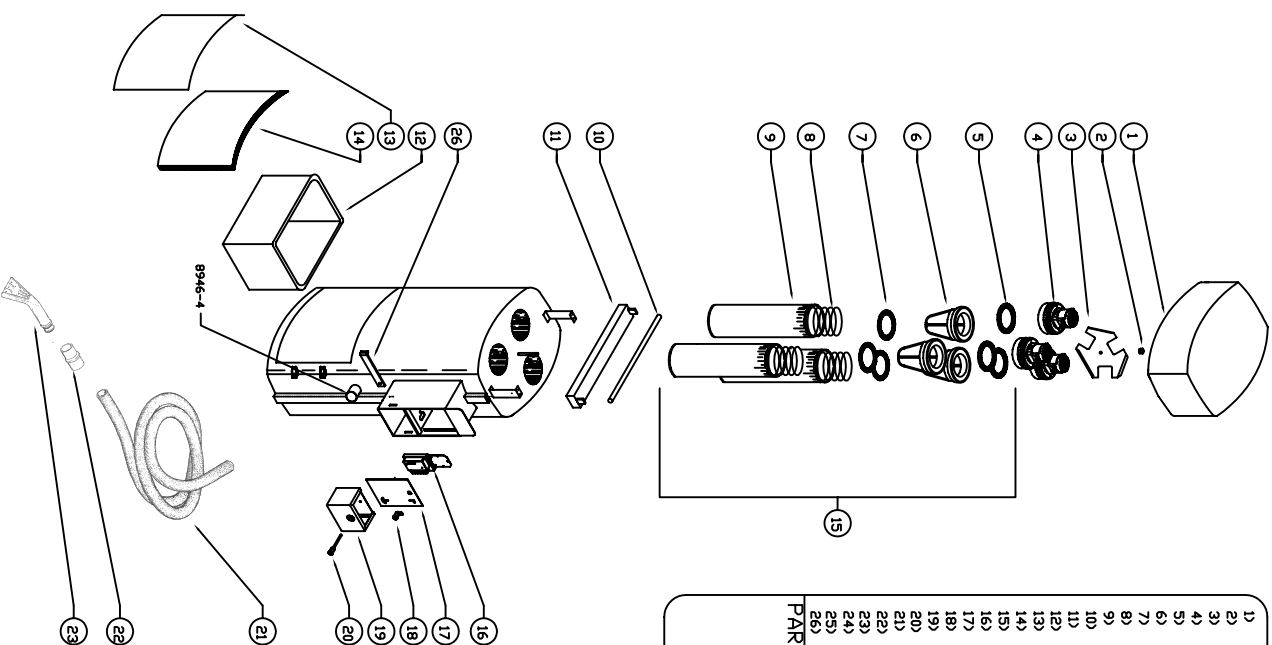


# J.E. ADAMS AIR/VAC/WATER 2 BOX



# J.E. ADAMS OVAL VAC

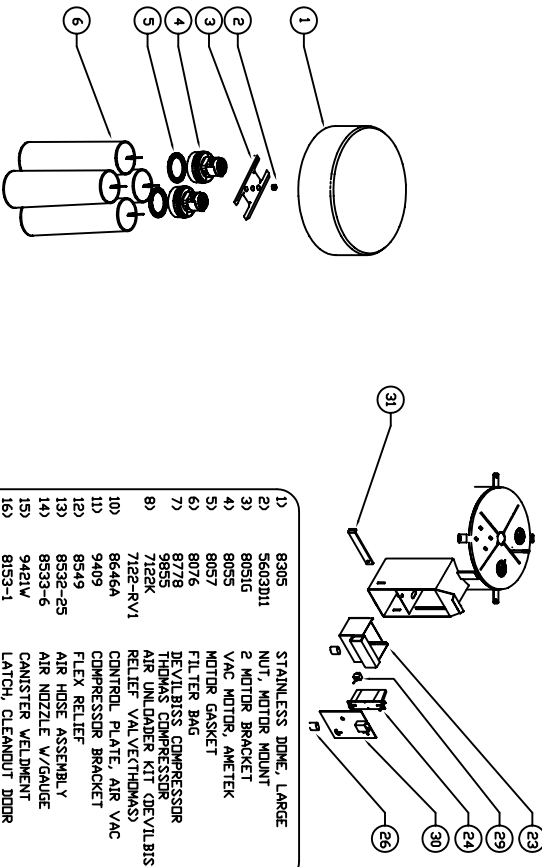
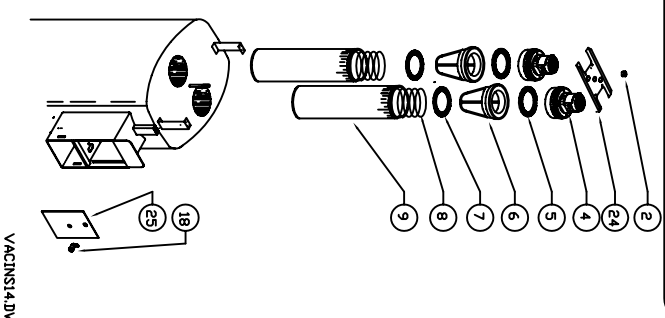
# J.E. ADAMS AIR-WATER-VAC 1 DOOR



|     |            |                           |
|-----|------------|---------------------------|
| 1)  | 8915       | DOME                      |
| 2)  | 5603D11    | NUT, MOTOR MOUNT          |
| 3)  | 8937       | 3 MOTOR MOUNT             |
| 4)  | 8055       | VAC MOTOR, AMETEK         |
| 5)  | 8057       | MOTOR GASKET              |
| 6)  | 8060       | MOTOR BUSHING             |
| 7)  | 8063       | BUSHING GASKET            |
| 8)  | 8075       | FILTER SPRING             |
| 9)  | 8072       | FILTER BAG                |
| 10) | 8920-6     | FLUORESCENT LIGHT         |
| 11) | 8920-5     | FLUORESCENT LIGHT FIXTURE |
| 12) | 8920-4     | DIRT BIN                  |
| 13) | 8921-5W    | CLEANOUT DOOR             |
| 14) | 1085       | FLEX TRIM                 |
| 15) | 8079       | FILTER BAG ASSY           |
| 16) | 8712SS4    | SSAC TIMER                |
| 17) | 8932W      | FACEPLATE, CAMLOCK        |
| 18) | 8933       | CAMLOCK                   |
| 19) | 8520W      | COIN BOX                  |
| 20) | 8955       | THREADED LOCK, MEDCD      |
| 21) | 2036       | 2" x 15' BLACK VAC HOSE   |
| 22) | 2091       | CUFF                      |
| 23) | 2056-BLACK | BLACK CLAY NOZZLE         |
| 24) | 8051G      | 2 MOTOR BRACKET           |
| 25) | 8932C      | FACEPLATE, CAMLOCK        |
| 26) | 8206       | LOCK BAR (OPTIONAL)       |

## PARTS NOT SHOWN ON DRAWING

|        |                                 |
|--------|---------------------------------|
| 8173   | DECAL, DEPOSIT QUARTERS SLOWLY  |
| 8422-1 | DECAL, TOUCH OF CLASS FULL CAN  |
| 8422-2 | DECAL, TOUCH OF CLASS SHORT CAN |
| 8422-3 | DECAL, TOUCH OF CLASS DOOR      |
| 8429-3 | DECAL, \$50                     |
| 8429-4 | DECAL, \$75                     |
| 8429-5 | DECAL, \$100                    |



|     |            |                              |
|-----|------------|------------------------------|
| 1)  | 8305       | STAINLESS DOME, LARGE        |
| 2)  | 5603D11    | NUT, MOTOR MOUNT             |
| 3)  | 8051G      | 2 MOTOR BRACKET              |
| 4)  | 8055       | VAC MOTOR, AMETEK            |
| 5)  | 8057       | MOTOR GASKET                 |
| 6)  | 8076       | FILTER BAG                   |
| 7)  | 8778       | DEVILBISS COMPRESSOR         |
| 8)  | 9855       | THOMAS COMPRESSOR            |
| 9)  | 7122K      | AIR UNILADER KIT (DEVILBISS) |
| 10) | 7122-RV1   | RELIEF VALVE(THOMAS)         |
| 11) | 8646A      | CONTROL PLATE, AIR VAC       |
| 12) | 9409       | COMPRESSOR BRACKET           |
| 13) | 8549       | FLEX RELIEF                  |
| 14) | 8532-25    | AIR HOSE ASSEMBLY            |
| 15) | 8533-6     | AIR NOZZLE W/GAUDE           |
| 16) | 9421V      | CANISTER WELDMENT            |
| 17) | 8153-1     | LATCH, CLEANOUT DOOR         |
| 18) | 8615-5W    | CLEANOUT DOOR                |
| 19) | 8159       | DOOR GASKET                  |
| 20) | 8599       | CLEANOUT BAG                 |
| 21) | 2091       | CUFF                         |
| 22) | 2056-BLACK | CLAY NOZZLE, BLACK           |
| 23) | 8712E      | INTTEC TIMER                 |
| 24) | 8204RV     | CONBOX, RIGHT PIN            |
| 25) | 8149       | INDEX COIN ACCEPTOR          |
| 26) | 8609RV     | FACEPLATE, DUAL ACCEPTORS    |
| 27) | 8638       | PIN LOCK                     |
| 28) | 2036       | 2" x 15' BLACK VAC HOSE      |
| 29) | 8919       | TOGGLE SWITCH                |
| 30) | 8211R2-1   | FACEPLATE, FREE AIR          |
| 31) | 8206       | LOCK BAR (OPTIONAL)          |
| 32) | 8697       | SILENDED (VATER)             |

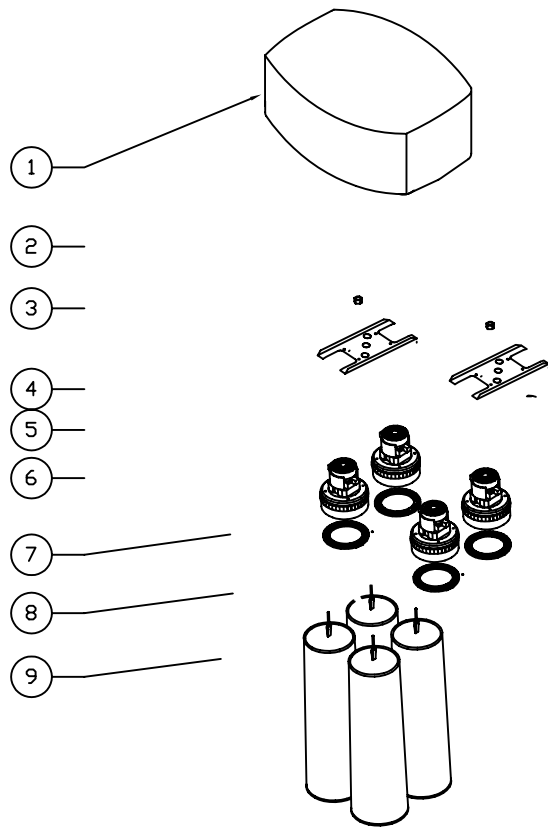
## PARTS NOT SHOWN ON DRAWING

|        |                             |
|--------|-----------------------------|
| 8427-1 | DECAL, AIR/VAC CAN, VACUUM  |
| 8427-2 | DECAL, AIR/VAC CAN, AIR     |
| 8427-3 | DECAL, DOME FRONT           |
| 8427-4 | DECAL, DOME REAR            |
| 8429-1 | DECAL, HANG HOSE HERE       |
| 8429-3 | DECAL, \$50                 |
| 8429-4 | DECAL, \$75                 |
| 8429-5 | DECAL, \$100                |
| 8567   | DECAL, AIR 50 CENTS, YELLOW |
| 8647   | WATER SPOUT                 |

|                        |                            |
|------------------------|----------------------------|
| DEVILBISS REPAIR PARTS |                            |
| 8778-4                 | SLEEVE/COMPRESSOR RING KIT |
| 8778-5                 | ECCENTRIC/ BEARING ASSY    |
| 8778-6                 | FAN BLADE                  |
| 8778-9                 | COMPRESSOR HEAD            |
| 8778-10                | MINI SPROUD                |
| 8778-11                | VALVE PLATE                |
| 8778K                  | 1/2 HP COMPRESSOR KIT      |
| THOMAS REPAIR PARTS    |                            |
| 9855-2                 | SERVICE KIT                |

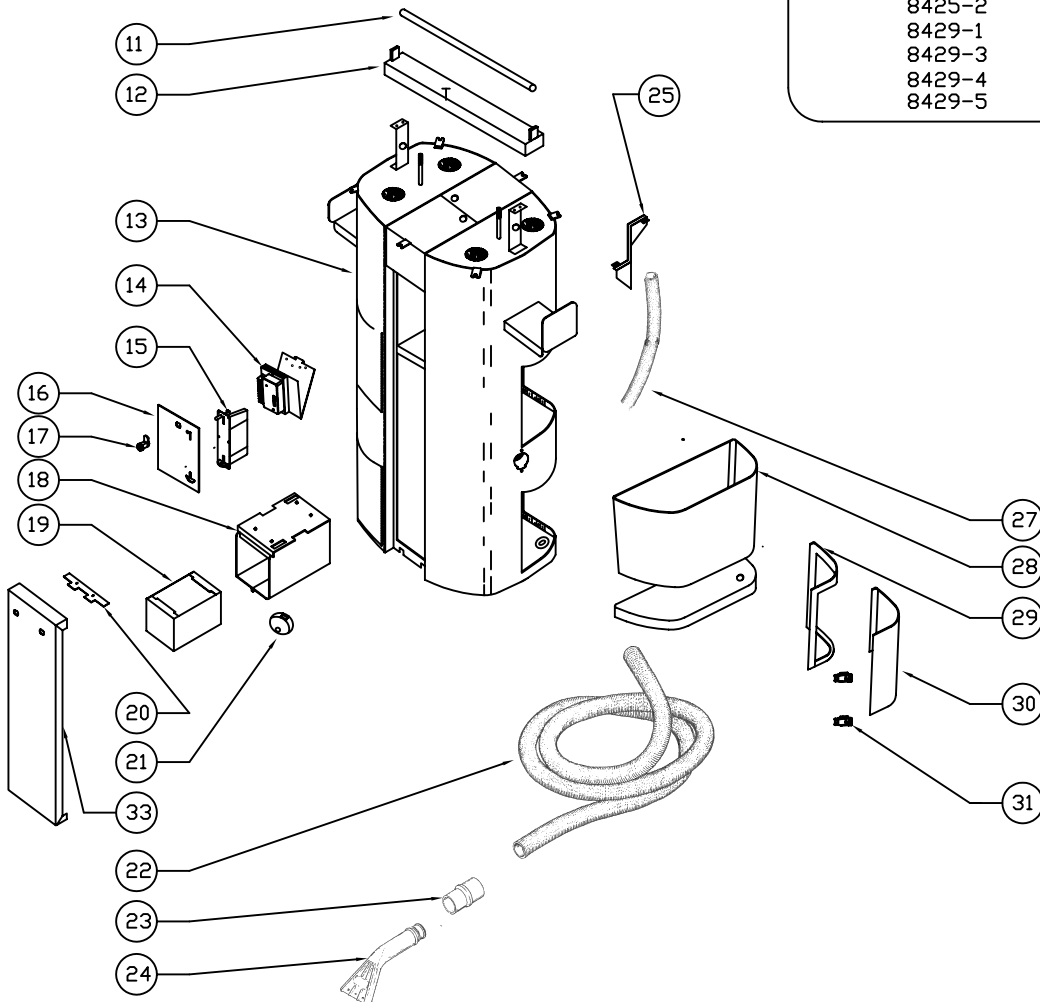


# J.E. ADAMS DUAL VAC



- |     |            |                               |
|-----|------------|-------------------------------|
| 1)  | 8915       | OVAL DOME                     |
| 2)  | 5603D11    | NUT, MOTOR MOUNT              |
| 3)  | 8051G      | 2 MOTOR BRACKET               |
| 4)  | 8055       | VAC MOTOR, AMETEK             |
| 5)  | 8057       | MOTOR GASKET                  |
| 9)  | 8076       | FILTER BAG                    |
| 11) | 8920-6     | FLOURESCENT LIGHT TUBE        |
| 12) | 8920-5     | FLOURESCENT LIGHT FIXTURE     |
| 13) | 8961W      | DUAL VAC CANISTER WELDMENT    |
| 14) | 8972       | CONTROL PLATE ASSY.           |
|     | 8712SS4    | SSAC TIMER                    |
| 15) | 8149       | IMONEX COIN ACCEPTOR          |
| 16) | 8965W      | FACEPLATE WELDMENT            |
| 17) | 8953       | CAM LOCK                      |
| 18) | 8968-1W    | COIN BOX ENCLOSURE            |
| 19) | 8968-2W    | COIN BOX                      |
| 20) | 8963       | FACEPLATE SPACER              |
| 21) | 6024       | ABUS LOCK                     |
| 22) | 2036       | 2' X 15' BLACK VAC HOSE       |
| 23) | 2091       | CUFF                          |
| 24) | 2056-BLACK | BLACK CLAW NOZZLE             |
| 25) | 8973W      | COINCHUTE (VAULT READY ONLY)  |
| 27) | 8976       | VAULT HOSE (VAULT READY ONLY) |
| 28) | 8975       | TRASH BIN                     |
| 29) | 8159       | DOOR GASKET                   |
| 30) | 8962-5W    | CLEANOUT DOOR                 |
| 31) | 8153-1     | CLEANOUT DOOR LATCH           |
| 33) | 8964-1W    | BOTTOM COVER, DUAL LATCHES    |

- PARTS NOT SHOWN ON DRAWING**
- |        |                                |
|--------|--------------------------------|
| 8173   | DECAL, DEPOSIT QUARTERS SLOWLY |
| 8425-1 | DECAL, DUAL CAN LOWER          |
| 8425-2 | DECAL, DUAL CAN UPPER          |
| 8429-1 | DECAL, HANG HOSE HERE          |
| 8429-3 | DECAL, \$.50                   |
| 8429-4 | DECAL, \$.75                   |
| 8429-5 | DECAL, \$1.00                  |





## TROUBLE SHOOTING



**IMPORTANT!** TROUBLESHOOTING SHOULD BE DONE WITH POWER DISCONNECTED IF POSSIBLE. PROCEDURES WITH **! CAUTION!** SIGN REQUIRE THAT POWER BE ON. IF IN DOUBT ABOUT THE SAFETY OF ANY OF THESE PROCEDURES, CONSULT A QUALIFIED ELECTRICIAN OR TECHNICIAN. PROCEDURES MARKED **! CAUTION!** MAY INVOLVE DANGEROUS VOLTAGES.

|  |   |
|--|---|
| UNIT WILL NOT START<br><b>! CAUTION!</b>   | <ol style="list-style-type: none"> <li>1) IS THERE POWER TO THE MACHINE? (CHECK VOLTAGE)</li> <li>2) CHECK SERIAL NUMBER TAG TO VERIFY CORRECT POWER SUPPLY HAS BEEN HOOKED TO UNIT.</li> <li>3) IS POWER PRESENT WHEN TIMER IS ACTIVATED? (CHECK VOLTAGE) IF TIMER DOES NOT ACTIVATE BUT POWER IS PRESENT, TIMER MAY NEED REPLACED OR COIN ACCEPTOR MAY NEED TO BE CHECKED.</li> </ol>   |
| TIMER ACTIVATES BUT UNIT NOT RUNNING.<br><b>! CAUTION!</b>                         | <ol style="list-style-type: none"> <li>1) CHECK FUSES. ARE THEY BAD, IF SO REPLACE.</li> <li>2) CHECK WIRE CONNECTIONS FROM THE TIMER TO THE MOTORS. DO THEY HAVE A GOOD CONNECTION? ARE THEY CONNECTED?</li> <li>3) CHECK MOTORS, MOTOR MAY HAVE BURNT OUT. MAY NEED TO REMOVE MOTOR AND CHECK IT WITH A DIRECT 110V POWER SOURCE TO VERIFY IT IS WORKING PROPERLY.</li> </ol>   |
| FUSE KEEPS BLOWING?  | <ol style="list-style-type: none"> <li>1) CHECK VAC MOTOR. HOW MANY AMPS IS IT PULLING? NORMALLY 1 MOTOR SHOULD PULL BETWEEN 7-8.5 AMPS ROUGHLY. IF MOTOR PULLS MORE THAN SPECIFIED THE MOTOR MAY NEED REPLACED.</li> <li>2) IS THE WIRE CONNECTED TO THE MOTOR MAKING A GOOD CONNECTION?</li> <li>3) LOOK FOR FRAYED WIRES OR EXPOSED WIRING TO MAKE SURE IT IS NOT SHORTING OUT.</li> </ol>   |
| TIMER NOT GIVING ACCURATE TIME.  | <ol style="list-style-type: none"> <li>1) TURN ALL SWITCHS TO THE OFF POSTION. ONCE THIS HAS BEEN DONE SET ALL SWITCHS TO THE DESIRED SETTING AND RETRY. TIMER STILL INACCURATE? REPLACE TIMER.</li> </ol>  |
| UNIT RUNS CONTINUOUSLY AND WILL NOT TURN OFF.                                      | <ol style="list-style-type: none"> <li>1) TIMER SHORTED AND MAY NEED REPLACED.</li> <li>2) DOES YOUR UNIT HAVE A RELAY? IF SO CHECK RELAY, ARE THE CONTACTS STUCK OPEN. IF SO REPLACE.</li> </ol>   |
| COMPRESSOR HUMS BUT WILL NOT START<br><b>(AIR-VAC OR AIR-WATER-VAC UNIT)</b>       | <ol style="list-style-type: none"> <li>1) IS THERE PRESSURE IN THE AIR LINE? IF SO BLEED PRESSURE AND RETRY. IF NOT GO TO (2).</li> <li>2) REMOVE UNLOADER FROM THE HEAD AND RETRY. DOES UNIT STILL JUST HUM? IF SO REPLACE COMPRESSOR. IF THIS TAKES CARE OF IT UNLOADER MAY BE DEFECTIVE AND MAY NEED REPLACED.</li> </ol>  |
| UNIT STARTS BUT THERE IS NO AIR PRESSURE<br><b>(AIR-VAC OR AIR-WATER-VAC UNIT)</b> | <ol style="list-style-type: none"> <li>1) REMOVE AIR CHUCK. IS THERE AIR PRESSURE NOW? IF THERE IS REPLACE AIR CHUCK. IF THERE IS NOT GO TO STEP (2).</li> <li>2) REMOVE HOSE FROM UNLOADER. IS THERE PRESSURE NOW? IF SO AIR HOSE MAY BE CLOGGED UP AND MAY NEED REPLACED. IF UNIT STILL HAS NO AIR PRESSURE GO TO STEP (3).</li> <li>3) REMOVE UNLOADER. IS THERE AIR PRESSURE NOW? IF SO UNLOADER IS BAD AND NEEDS REPLACED. IF NO AIR PRESSURE IS PRESENT NOW, REPLACE COMPRESSOR.</li> </ol> |

IF PROBLEMS STILL EXIST AFTER RUNNING THRU THE TROUBLE SHOOTING LIST PLEASE CALL YOUR DISTRIBUTOR FOR FURTHER HELP OR CALL J.E. ADAMS INDUSTRIES. WHEN CALLING PLEASE HAVE THE FOLLOWING INFORMATION READY: YOUR MODEL NUMBER, DATE THE UNIT WAS PURCHASED, DISTRIBUTOR NAME, YOUR COMPANY OR BUSINESS NAME AND A NUMBER YOU CAN BE REACHED AT.

## MAINTENANCE

- 1) SHAKE THE DIRT FROM THE FILTER BAGS. WE RECOMMEND DOING THIS WEEKLY AND IF POSSIBLE MACHINE WASHING THE BAGS MONTHLY.
- 2) REMOVE DIRT AND DEBRIS FROM THE CANISTER AS NEEDED.
- 3) CHECK VAC HOSE FOR SIGNS OF WEAR AND REPLACE AS NEEDED.
- 4) CLEAN THE OUTSIDE OF CANISTER WITH A STAINLESS STEEL POLISH. DO NOT USE ANY ABRASIVE CLEANERS, STEEL WOOL OR ANY KIND OF BRUSH TO CLEAN CANISTER. THIS MAY DAMAGE THE FINISH OF THE CANISTER.

